

Addendum No. 004, Attachment B – RFP Revisions

City of Rancho Cucamonga
Fire Station 178
Rancho Cucamonga, California

<p>This Addendum shall be a part of the Contract Documents and modifies the original bidding documents as noted below. Acknowledge receipt of this Addendum in your proposal. Failure to do so may subject the Bidder to disqualification.</p>
--

1.0 Response to Contractor Questions

Item No. 1.0.1

Response to Questions

1. Refer to Questions (s)/Clarifications form with Answer(s) /Comments (s)

Response: See Addendum No. 004.

1.1 Architectural Drawing Clarifications

Item No. 1.1.1

Drawing Clarification;

Sheet A100 – Drawings Revisions:

1. Limit of development area expanded to include potential solar zone to the south of the fire station. Landscaping/tree and street work along Town Center Drive has been clouded to indicate that the limit of development along that side of the project continues to the back of walk. Landscaping/tree and street work along Terra Vista Drive has been clouded to indicate that the limit of development along that side of the project continues to the back of curb.

See revised sheet A100 – ARCHITECTURAL SITE PLAN

Item No. 1.1.2

Drawing Clarification;

Sheet A111 – Drawing Revisions:

1. C3/A111 and D3/A111, floor assemblies have been added.

See revised sheet A111 – INTERIOR WALL AND FLOOR ASSEMBLIES

Item No. 1.1.3

Drawing Clarification;

Sheet A132 – Drawings Revisions:

1. D2/A132 has been added.
2. Graphic clarification has been provided to delineate the extent of the epoxy terrazzo system as well as the cementitious concrete underlayment. Refer to revised D5/A132 Second Floor Plan and revised A5/A132 Key Legend.

See revised sheet A132 – SECOND FLOOR PLAN AND CLERESTORY PLAN

Addendum No. 004, Attachment B – RFP Revisions

City of Rancho Cucamonga
Fire Station 178
Rancho Cucamonga, California

Item No. 1.1.4

Drawing Clarification;

Sheet A700 – Drawing Revisions:

1. Revision to finish schedule, 220 EQUIPMENT PLATFORM FLOOR FINISH/BASE revised to SHV.
2. Revision to legend, GC has been revised to GYPSUM CEMENT UNDERLAYMENT.

See revised sheet A700 – FINISH SCHEDULE

1.2 Structural Drawing Clarification

Item No. 1.2.1

Drawing Clarification;

Sheet S1.7 Typical Details No. 7 – Drawings Revisions:

1. Detail 1/S1.7 Shear Wall Schedule, has been revised.

See revised sheet S1.7 TYPICAL DETAILS NO. 7

1.3 Plumbing Drawing Clarifications

Item No. 1.3.1

Drawing Clarification;

Sheet P131 Plumbing Overall First Floor Plan – Drawings Revisions:

1. Roof and second floor deck storm drains indicated, and overflow piping added.

See revised sheet P131 PLUMBING OVERALL FIRST FLOOR PLAN

Item No. 1.3.2

Drawing Clarification;

Sheet P132 Plumbing Enlarged First Floor Plan – Waste & Vent – Drawings Revisions:

1. Roof storm drain indicated, and overflow piping added.

See revised sheet P132 ENLARGED FIRST FLOOR PLAN – WASTE & VENT

Item No. 1.3.3

Drawing Clarification;

Sheet P134 Plumbing Overall Second Floor Plan – Drawings Revisions:

1. Second floor deck drains (RD-1) and overflow piping added, storm drain lines indicated.

Addendum No. 004, Attachment B – RFP Revisions

City of Rancho Cucamonga
Fire Station 178
Rancho Cucamonga, California

See revised sheet P134 OVERALL SECOND FLOOR PLAN

Item No. 1.3.4

Drawing Clarification;

Sheet P135 Plumbing Enlarged Second Floor Plan – Drawings Revisions:

1. Roof storm drain indicated, and overflow piping added.

See revised sheet P135 PLUMBING ENLARGED SECOND FLOOR PLAN

Item No. 1.3.5

Drawing Clarification;

Sheet P150 Plumbing Roof Plan – Drawings Revisions:

1. Roof storm drain symbol changed, and overflow piping added.

See revised sheet P150 PLUMBING ROOF PLAN

1.4 Appendix B Clarifications

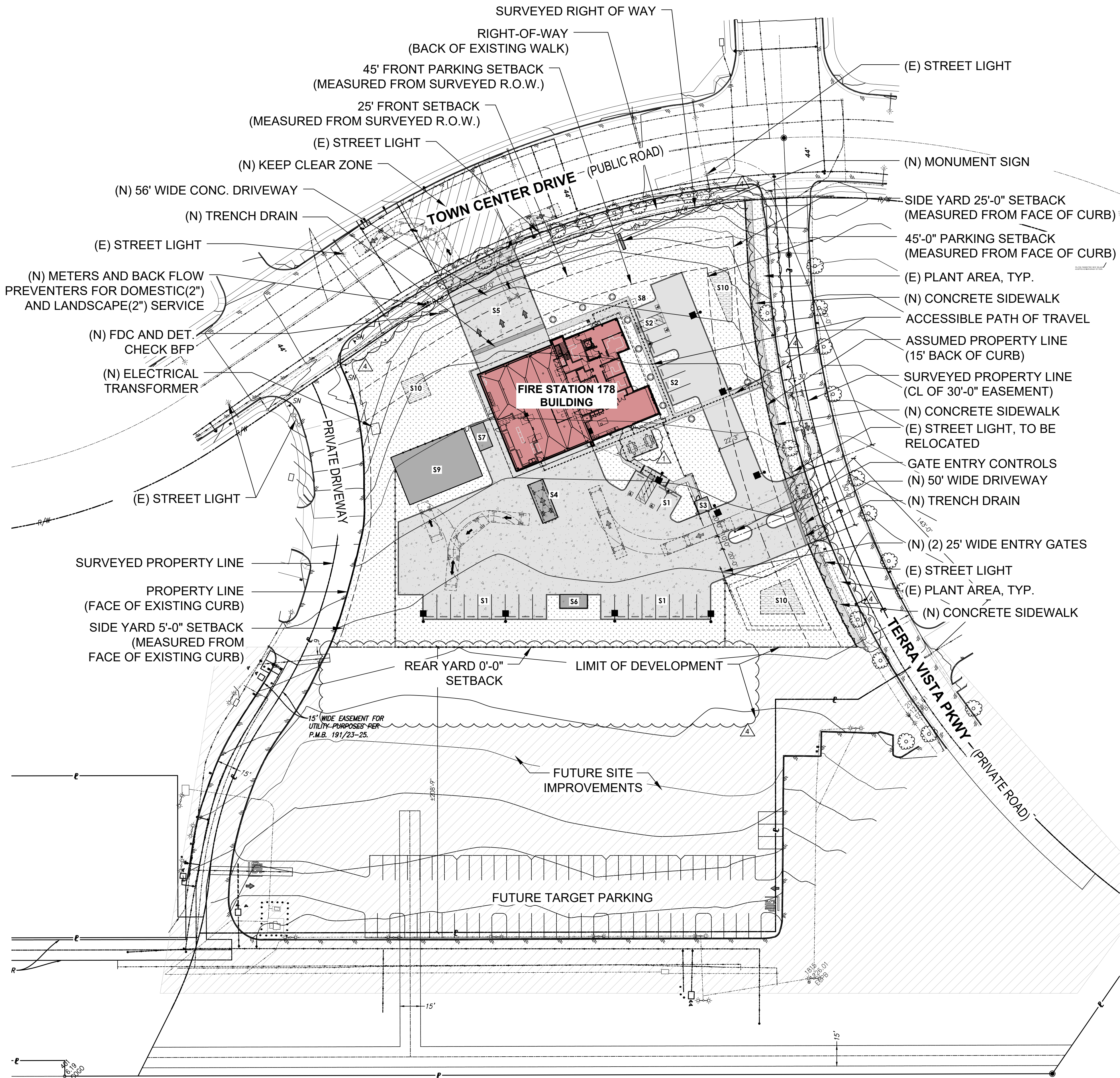
Item No. 1.4.1

Specification Clarification;

Specification Section 32 31 19 – Fences, Gates, and Motorized Operators has been revised:

1. Item 2.07, Ornamental Perforated Metal Panels, G., has been added to include BOK Modern Blade & Post Fence Standardized Detail 11-page product document. This is for use at all site fencing and gates, patio fencing and trash enclosure gates.

See attached exhibit, by BOK Modern, for added item 2.07, G., SECTION 32 31 19 – FENCES, GATES, AND MOTORIZED OPERATORS.



LEGEND:

- NEW STRUCTURE & SITE SUPPORT SPACES**
- S1** FIRE DEPARTMENT PARKING (20 SPACES WITH ACCESSIBLE)
 - S2** VISITOR PARKING SPACES (6 SPACES WITH ACCESSIBLE)
 - S3** TRASH ENCLOSURE
 - S4** VEHICLE WASH DOWN AREA
 - S5** CONCRETE FRONT APRON
 - S6** FIRE HYDRANT AREA
 - S7** GENERATOR PAD
 - S8** FLAG POLE
 - S9** FUTURE PRE-ENGINEERED METAL STORAGE BUILDING
 - S10** SITE DRAIN MANAGEMENT AREA

- (N) FENCE LINE
- PROPERTY LINE
- ACCESSIBLE PATH OF TRAVEL TO PUBLIC RIGHT-OF-WAY
- FUTURE SITE IMPROVEMENTS
- (N) LANDSCAPE AREA
- (N) CONCRETE SIDEWALK/PAVEMENT
- (N) BIO-RETENTION AREA
- (N) ASPHALT PAVING
- (N) PARKING LOT LIGHT FIXTURE, TYP.
- (N) BOLLARD LIGHT FIXTURE, TYP.

architect:



1212 BROADWAY, SUITE 1700
OAKLAND, CA 94612
phone: 510.208.9400
www.marymcgratharchitects.com

consultants:

no.	description	date
	SUBMISSION DATE	11/18/2020
1	ADDENDA #1	06/10/2021
4	ADDENDA #4	07/01/2021

phase:

BRIDGING DOCUMENTS



CITY OF RANCHO CUCAMONGA

FIRE STATION 178

TOWN CENTER DR., RANCHO CUCAMONGA, CA 91730

drawing title:

ARCHITECTURAL SITE PLAN

project no.:

2811.01

sheet no.:

A100

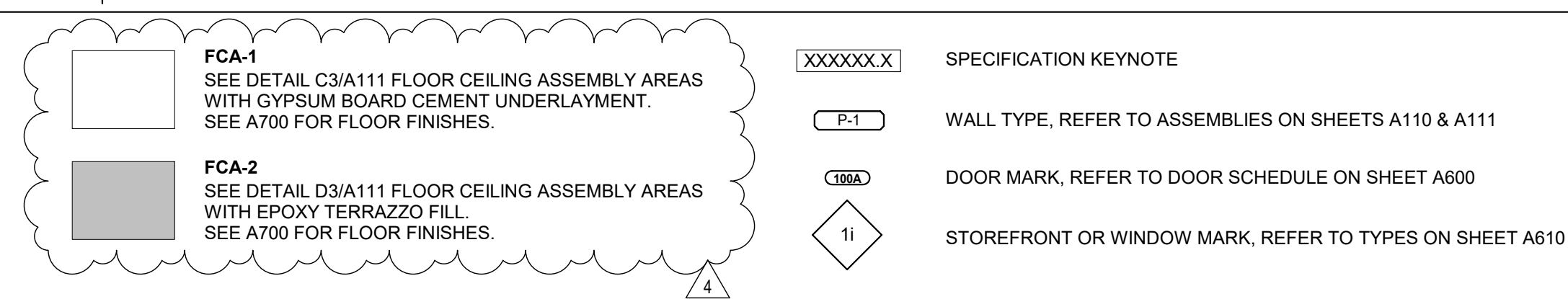
© Mary McGrath Architects | All Rights Reserved

SCALE: 1"=40'

0 40 80 120

PRELIMINARY - NOT FOR CONSTRUCTION

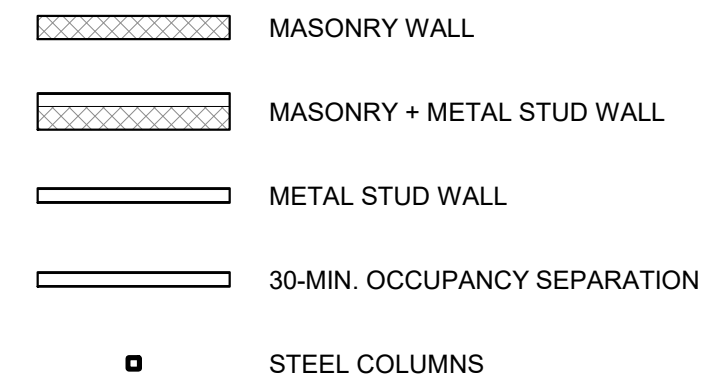
A5 | KEY LEGEND



A3 SPECIFICATION KEYNOTES

051200.1	STEEL COLUMN, REFER TO STRUCTURAL DWGS
077200.1	ROOF ACCESS HATCH AND HATCH FALL PROTECTION RAIL GUARD SYSTEM WITH SELF CLOSING GATE.
085213.1	ALUMINUM WINDOW
115200.1	RECESS TV MOUNT BRACKET. REFER TO ELECTRICAL DWGS FOR TV OUTLET W/ DATA
220000.1	COMBO ROOF OVERFLOW DRAIN, REFER TO PLUMBING DWGS
220000.6	BOTTLE FILLER W/ DRINKING FOUNTAIN, REFER TO PLUMBING DWGS

A2 : WALL LEGEND



A1	GENERAL NOTES
----	---------------

- A. REFER TO CIVIL PLANS FOR FURTHER INFORMATION ON SITE IMPROVEMENTS, ADJACENT FLATWORK, AND ADJACENT GRADES TO THE BUILDING.
- B. REFER TO ARCHITECTURAL SITE PLAN FOR FURTHER INFORMATION.
- C. REFER TO ENLARGED FLOOR PLANS FOR FURTHER INFORMATION ON EQUIPMENT LOCATIONS AND FLOOR SLOPE ELEVATIONS OR CONCRETE MASONRY WALLS, UNLESS OTHERWISE NOTED/UTL SITE PLAN FOR FURTHER INFORMATION.
- D. ALL DIMENSIONS ARE TO THE FACE OF FRAMING OR CONCRETE MASONRY WALLS UNLESS OTHERWISE NOTED.
- E. REFER TO DRAWINGS A110 & A111 FOR EXTERIOR AND INTERIOR WALL TYPES.
- F. REFER TO STRUCTURAL PLANS TO VERIFY MINIMUM SHEAR WALL LENGTHS AND FOR FURTHER INFORMATION.
- G. CONTRACTOR TO REFER TO STRUCTURAL PLANS FOR LOCATION AND SIZE OF STRUCTURAL ELEMENTS AND COMPONENTS.
- H. REFER TO MECHANICAL PLANS FOR FURTHER INFORMATION ON MECHANICAL EQUIPMENT.
- I. REFER TO PLUMBING PLANS FOR FURTHER INFORMATION ON THE PLUMBING FIXTURES, COMPONENTS, AND SITE COORDINATION.
- J. REFER TO ELECTRICAL PLANS FOR FURTHER INFORMATION ON ELECTRICAL EQUIPMENT AND SITE COORDINATION.
- K. ALL DOOR THRESHOLDS TO BE LEVEL FROM JAMB TO JAMB, INCLUDING AT THE APPARATUS BAY FOLDING DOORS AND ROLLING / COILING DOORS.
- L. ALL DOOR JAMBS ON HINGE SIDE TO BE 4" FROM CORNER OF WALL UNLESS OTHERWISE NOTED.
- M. MINIMUM 1/8" / 12" SLOPE FOR CONCRETE FLOORS WHERE FLOOR AND TRENCH DRAIN OCCUR.
- N. CONTRACTOR IS RESPONSIBLE FOR COORDINATING WORK TO COMPLY WITH ACCESSIBLE STANDARDS PER CODE.
- O. FIRE EXTINGUISHER CABINETS ARE SHOWN AND NOTED W/ FEC, LOCATION TO BE CONFIRMED W/ FIRE MARSHALL.

architect:



1212 BROADWAY, SUITE 1700
OAKLAND, CA 94612
phone : 510.208.9400
www.marymcgratharchitects.com

consultants:

no.	date	description
	04/15/2021	100% BRIDGING DOCUMENTS
4	07/01/2021	ADDENDA #4

phase:

BRIDGING DOCUMENTS



**CITY OF RANCHO
CUCAMONGA**

FIRE STATION 178

**TOWN CENTER DR.
RANCHO CUCAMONGA, CA
91730**

drawing title:

SECOND FLOOR PLAN AND CLERESTORY PLAN

project no.:

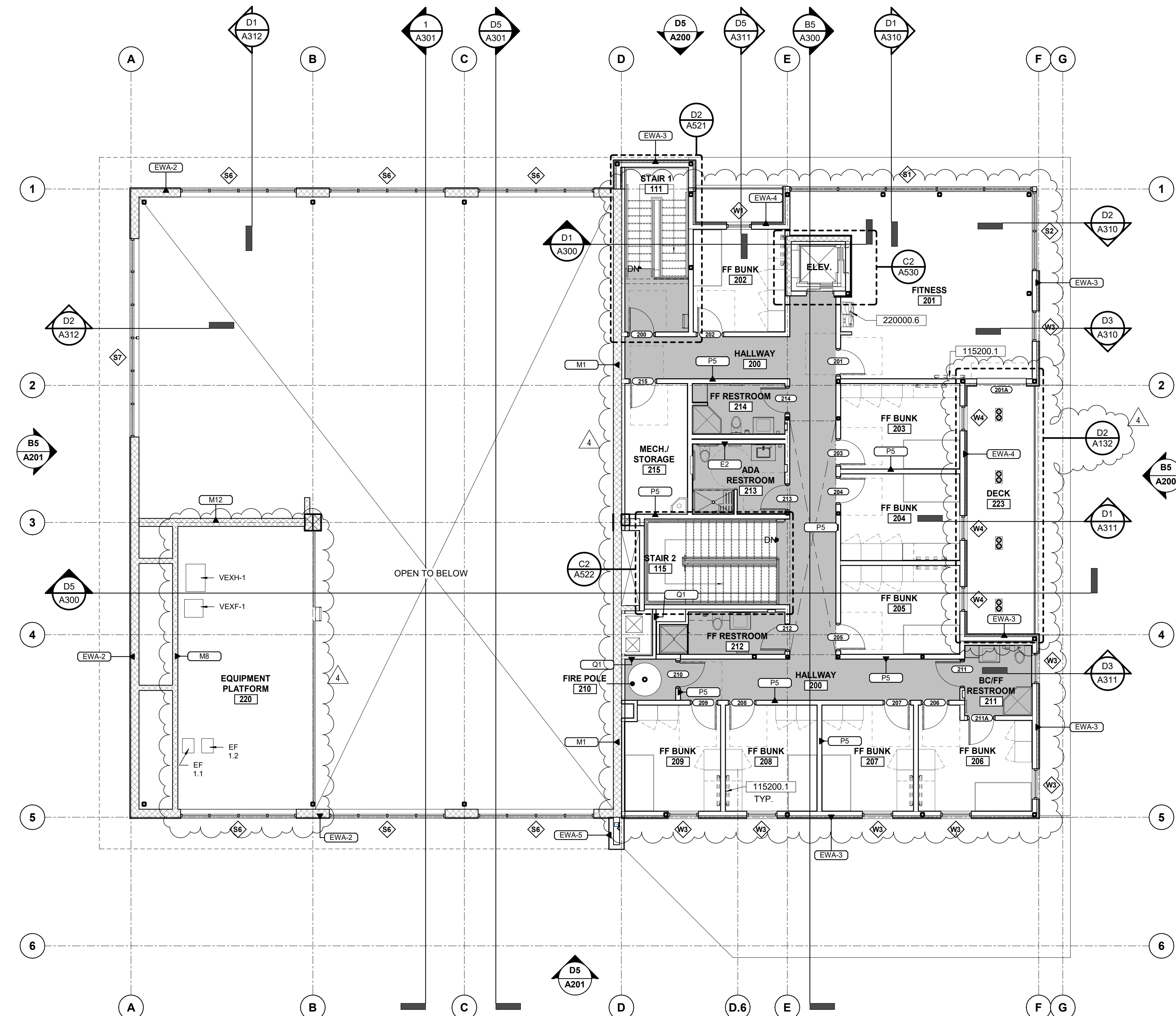
2811.01

sheet no.:

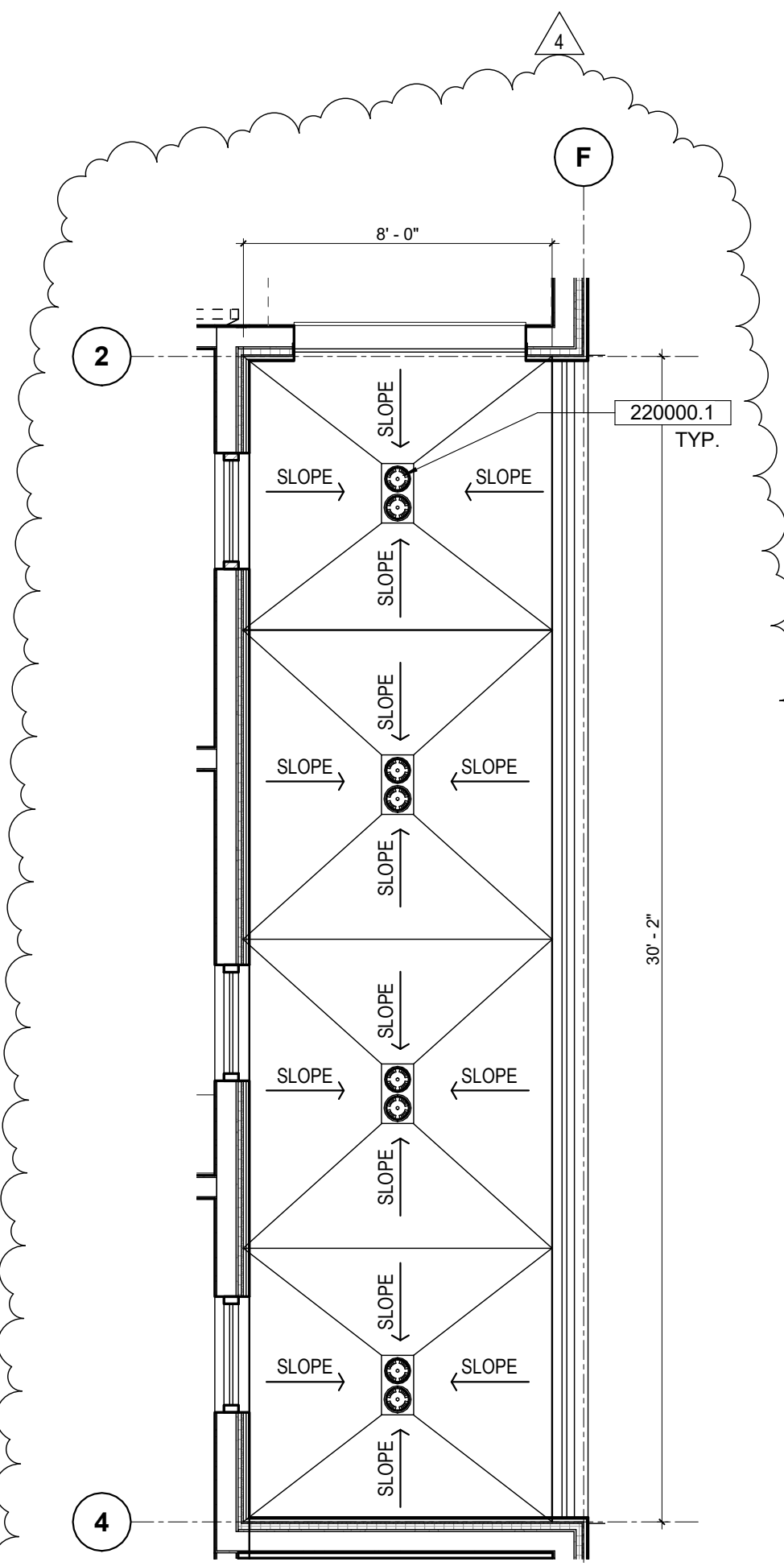
A132

© Mary McGrath Architects | All Rights Reserved

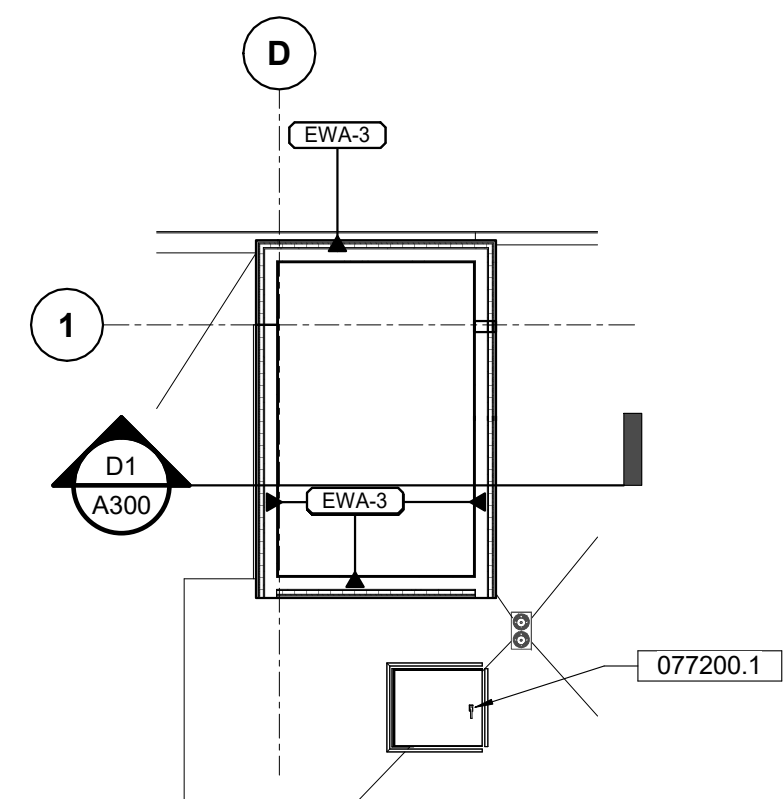
6/29/2021 4:32:38 PM



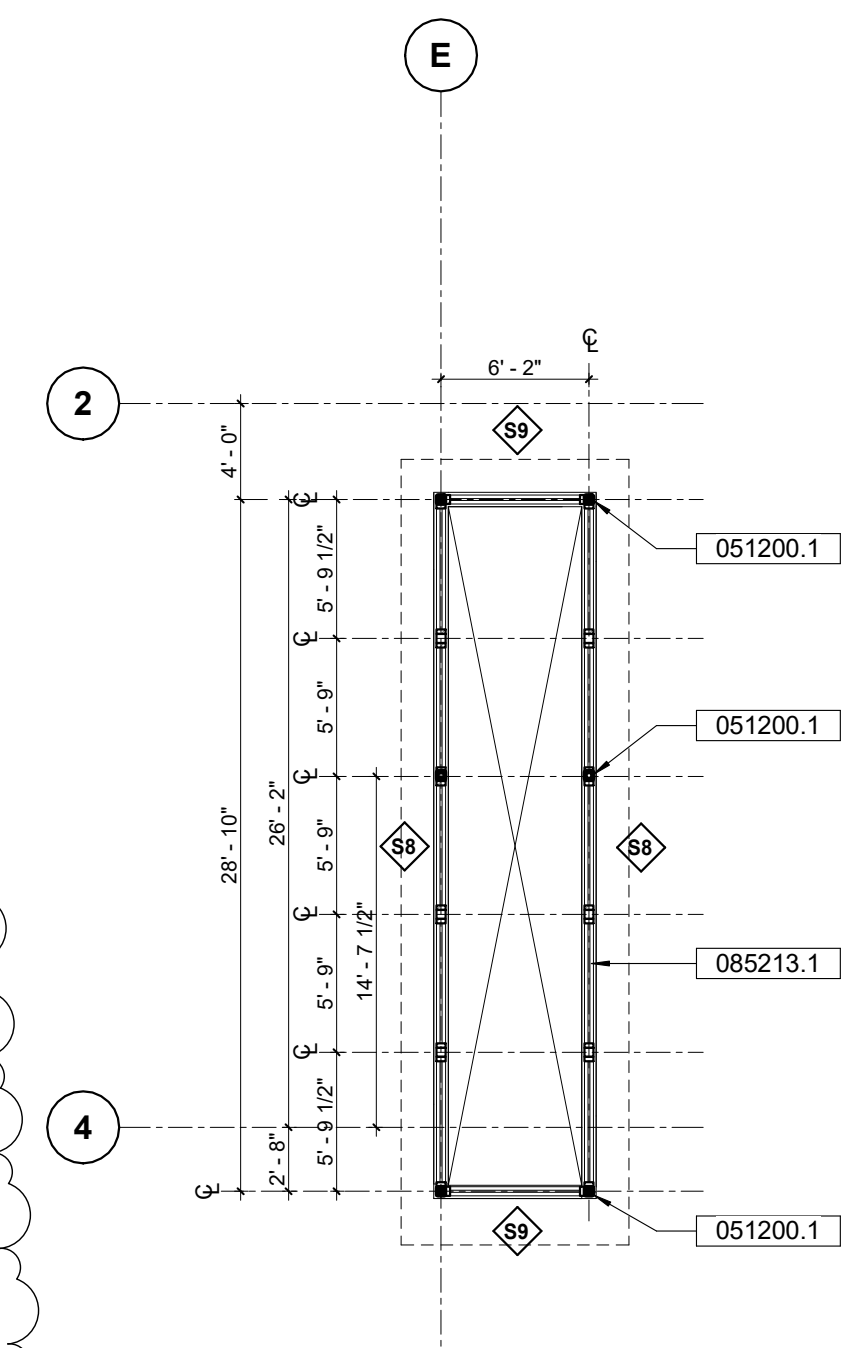
D5 SECOND FLOOR PLAN
1/8" = 1'-0"



D2 SECOND FLOOR DECK DRAIN LAYOUT/223
1/4" = 1'-0"



B1 CLERESTORY STAIR PLAN
1/8" = 1'-0"



D1 CLERESTORY FLOOR PLAN
1/8" = 1'-0"

PRELIMINARY - NOT FOR CONSTRUCTION

A5 FINISH SCHEDULE

B1	LEGEND
----	--------

RM NO.	ROOM NAME	FLOOR		WALL				CEILING MAT'L	REMARKS
		FINISH	BASE	NORTH	EAST	SOUTH	WEST		
FIRST FLOOR									
101	LOBBY	CPC	R	GLAZ. GWB	GLAZ. GWB	GWB	GWB	WD-1	
102	CONF./BC'S OFFICE	CPT	R	GWB, AWP	GWB, AWP, GMB	GWB, AWP	GWB, AWP	ACT-2	
103	ACCESSIBLE RESTROOM	ET	TB	CT	CT	CT	CT	GYP-2	
104	STATION OFFICE	CPC	R	GWB	GWB	GWB	GWB	ACT-2	
105	OFFICER'S OFFICE	CPC	R	GWB, AWP	GWB, AWP	GWB, AWP	GWB, AWP, GMB	ACT-2	
106	OFFICER'S OFFICE	CPC	R	GWB, AWP	GWB, AWP	GWB, AWP	GWB, AWP, GMB	ACT-2	
107	JANITOR / STORAGE	CPC	R	WPP	WPP	WPP	WPP	GYP-1	
108	ACCESSIBLE RESTROOM	ET	TB	CT, GWB	CT, GWB	CT, GWB	CT, GWB	GYP-2	
109	COMM.	SC	R	MCTB, GWB	MCTB, GWB	MCTB, GWB	MCTB, GWB	--	
110	HALLWAY	CPC	R	GWB	GWB	GWB	GWB	ACT-1	
111	STAIR 1	STNC	--	GWB	GWB	GWB	GWB	ACT-2	
112	DAY ROOM	CPT	R	GWB, AWP	GWB, AWP	GWB, AWP, GMB	--	WD-1	
113	DINING	CPC	R	GWB	GWB	GWB	GWB	WD-1	
114	KITCHEN	CPC	R	GWB, QSF	--	GWB, QSF	GWB, SS, QSF	GYP-1	
115	STAIR 2	STNC	--	GWB	GWB	GWB	GWB	ACT-1	
116	PANTRY	CPC	R	GWB	GWB	GWB	GWB	GYP-4	
117	MECH.	SC	R	GWB	GWB	GWB	GWB	--	
118	VEST.	CPC	R	WPP	WPP	WPP	WPP	ACT-1	
120	APPARATUS BAY	PC	R	CMU	CMU	CMU	CMU	GYP-1, GYP-4	
121	TURNOUT GEAR	PC	R	CMU	CMU	CMU	CMU	GYP-1	
122	CHARGING ALCOVE	PC	R	--	CMU	CMU	CMU	SFT-1	
123	TOOL SHOP	PC	R	CMU	CMU	CMU	CMU	GYP-1	
124	HOSE STOR./ DRYING ALCOVE	PC	R	CMU	--	CMU	CMU	GYP-1	
125	ELEV. MACHINE ROOM	SC	R	GWB	GWB	GWB	GWB	HSW-1	
126	FIRE POLE	PC	R	CMU	CMU	CMU	--	--	
127	MEDICAL CLEAN-UP ALCOVE	PC	R	CMU	CMU	CMU	--	HSW-1	
128	JAN.	SC	R	WPP	WPP	WPP	WPP	GYP-1	
129	MEDICAL STORAGE	SC	R	GWB	GWB	GWB	GWB	HSW-1	
130	MECH./YARD STOR.	SC	--	CMU	CMU	CMU	CMU	--	
131	ELECT.	SC	--	CMU	CMU	CMU	CMU	--	
132	FIRE RISER	SC	--	CMU	CMU	CMU	CMU	--	
133	WOKSHOP ALCOVE	PC	R	CMU	--	--	WPP	GYP-4	

RM NO.	ROOM NAME	FLOOR		WALL				CEILING MAT'L	REMARKS
		FINISH	BASE	NORTH	EAST	SOUTH	WEST		
SECOND FLOOR									
200	HALLWAY	ET	TB	GWB	GWB	GWB	GWB	ACT-1	
201	FITNESS	ATHL	R	GWB	GWB	WPP, GWB	WPP, GWB	ACT-1	
202	FF BUNK	CPT	R	GWB	GWB	GWB	GWB	ACT-2	
203	FF BUNK	CPT	R	GWB	GWB	GWB	GWB	ACT-2	
204	FF BUNK	CPT	R	GWB	GWB	GWB	GWB	ACT-2	
205	FF BUNK	CPT	R	GWB	GWB	GWB	GWB	ACT-2	
206	FF BUNK	CPT	R	GWB	GWB	GWB	GWB	ACT-2	
207	FF BUNK	CPT	R	GWB	GWB	GWB	GWB	ACT-2	
208	FF BUNK	CPT	R	GWB	GWB	GWB	GWB	ACT-2	
209	FF BUNK	CPT	R	GWB	GWB	GWB	GWB	ACT-2	
210	FIRE POLE	ET	TB	WPP	WPP	WPP	WPP	GYP-1	
211	BC/FF RESTROOM	ET	TB	CT, GWB	CT, GWB	CT, GWB	CT, GWB	GYP-2	SOLID-SURFACE SHOWER WALLS/CEILING
212	FF RESTROOM	ET	TB	CT, GWB	CT, GWB	CT, GWB	CT, GWB	GYP-2	SOLID-SURFACE SHOWER WALLS/CEILING
213	ADA RESTROOM	ET	TB	CT, GWB	CT, GWB	CT, GWB	CT, GWB	GYP-2	SOLID-SURFACE SHOWER WALLS/CEILING
214	FF RESTROOM	ET	TB	CT, GWB	CT, GWB	CT, GWB	CT, GWB	GYP-2	SOLID-SURFACE SHOWER WALLS/CEILING
215	MECH / STORAGE	SHV	SHV	GWB	GWB	GWB	GWB	GYP-1	
220	EQUIPMENT PLATFORM	SHV	SHV	CMU	--	CMU	CMU	GYP-4	
223	DECK	WT	--	--	--	--	--	WD-2	

B3 | GENERAL NOTES

- A. REFER TO ENLARGED PLANS FOR ADDITIONAL INFORMATION.
B. REFER TO REFLECTED CEILING PLANS A141 AND A142 FOR CEILING HEIGHTS AND
ADDITIONAL INFORMATION.
C. REFER TO INTERIOR ELEVATIONS FOR ADDITIONAL INFORMATION.

BASE	
R	RESILIENT
SHV	INTEGRAL COVE BASE
TB	6" PRECAST TERRAZZO BASE
CEILING	
ACT-1	SUSPENDED 2x2 ACOUSTICAL CEILING PANEL
ACT-2	SUSPENDED 2x4 ACOUSTICAL CEILING PANEL
GYP-1	PAINTED GYPSUM BOARD
GYP-2	PAINTED WATER-RESISTANT GYPSUM BOARD
GYP-3	CEMENT PANEL SOFFIT
GYP-4	PAINTED SUSPENDED GYPSUM BOARD
HSW-1	GYPSUM BOARD SHAFTWALL
SFT-1	GYPSUM BOARD SOFFIT
SSM	SOLID SURFACE MATERIAL
WD-1	SUSPENDED LINEAR CEILING - INTERIOR
WD-2	SUSPENDED LINEAR CEILING - EXTERIOR
FLOOR	
ATHL	ATHLETIC RUBBER FLOORING
CPC	COLOR POLISHED CONCRETE
CPT	CARPET TILE
ET	EROXY TERRAZZO
GC	GYPSUM CEMENT UNDERLAYMENT
PC	POLISHED CONCRETE
R	RUBBER
SC	SEALED CONCRETE
SHV	RESILIENT FLOORING
STNC	STAINED CONCRETE
WT	WOOD TILE SYSTEM
WALL	
AWP	ACOUSTIC WALL PANELS
CMU	CONCRETE MASONRY UNIT, PAINT
CT	CERAMIC TILE
GMB	GLASS MARKER BOARD
GWB	PAINTED GYPSUM BOARD
MCTB	8' H x 3/4" FIRE-RETARDANT BACKBOARD
QSF	QUARTZ SURFACING FABRICATION
SS	STAINLESS STEEL
WPP	WALL PROTECTION PANEL

architect:



1212 BROADWAY, SUITE 1700
OAKLAND, CA 94612
phone : 510.208.9400
www.marymcgratharchitects.co

consultants:

no.	date	description
	04/15/2021	100% BRIDGING DOCUMENTS
1	06/10/2021	ADDENDA #1
4	07/01/2021	ADDENDA #4

phase:

BRIDGING DOCUMENTS



**CITY OF RANCHO
CUCAMONGA**

FIRE STATION 178

**TOWN CENTER DR.
RANCHO CUCAMONGA, CA
91730**

drawing title:

FURNISHING/FINISH PLAN AND SCHEDULE

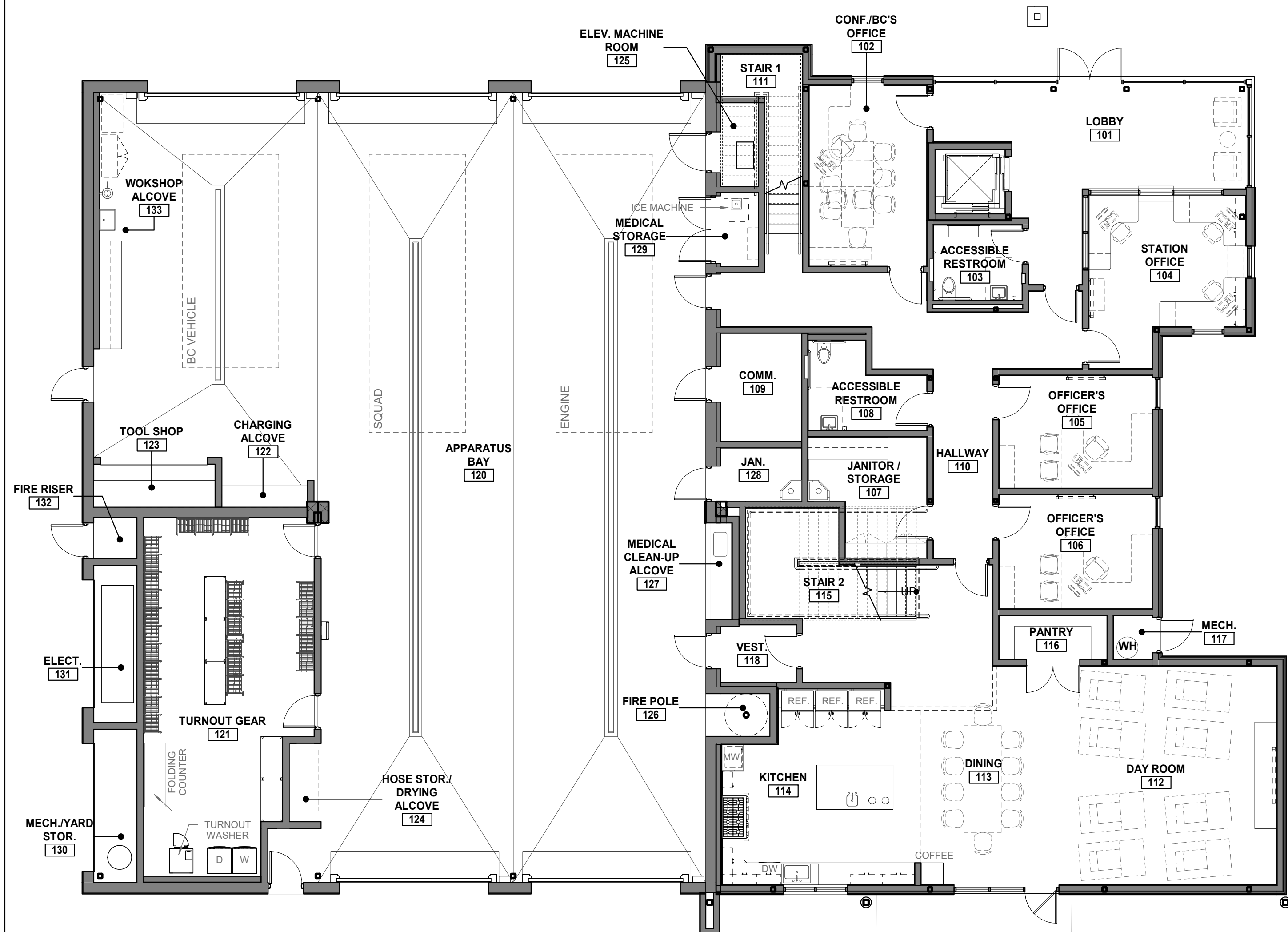
project no.:

2811.01

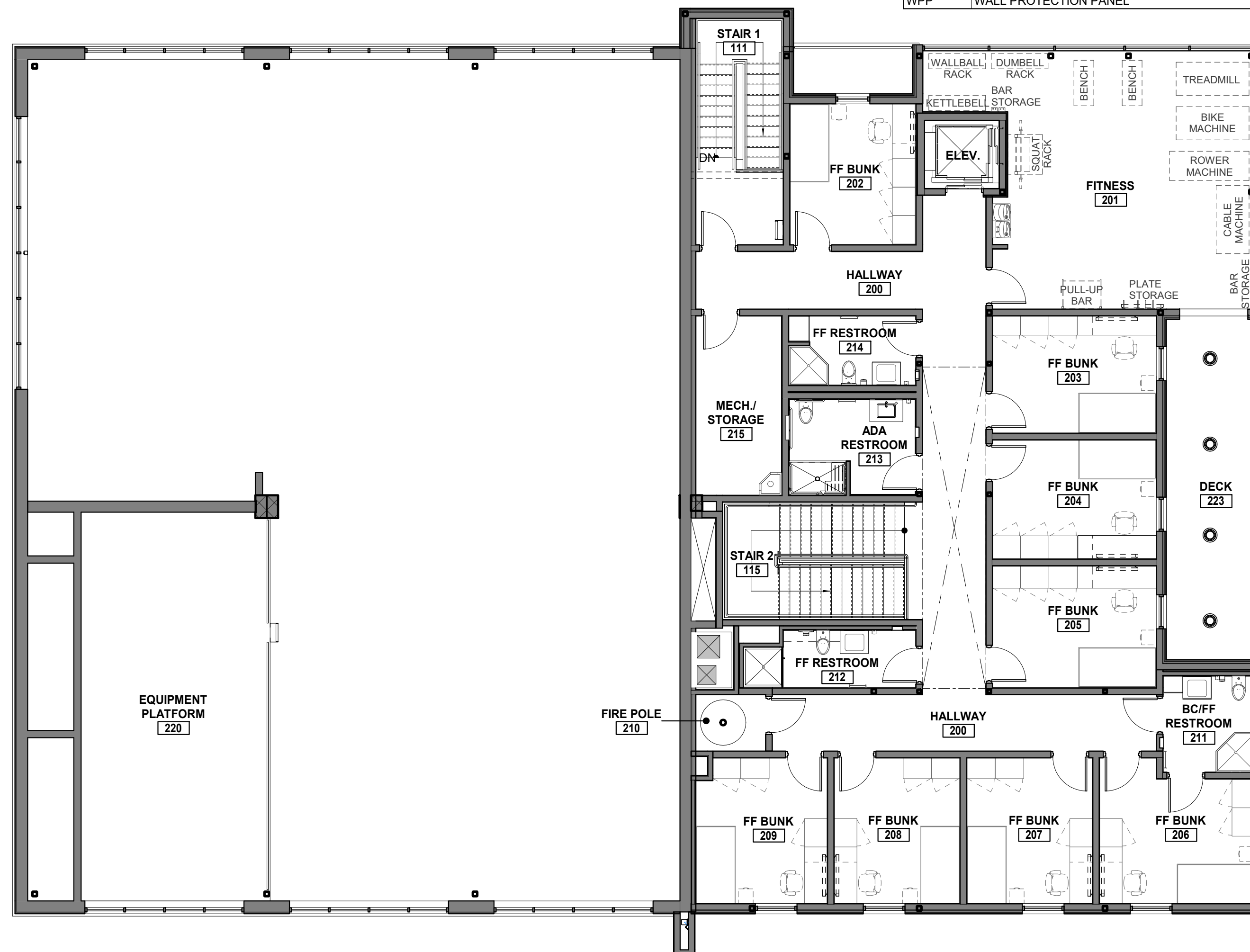
sheet no.:

A700

© Mary McGrath Architects | All Rights Reserved



D5 FIRST FLOOR FINISH PLAN
1/8" = 1'-0"



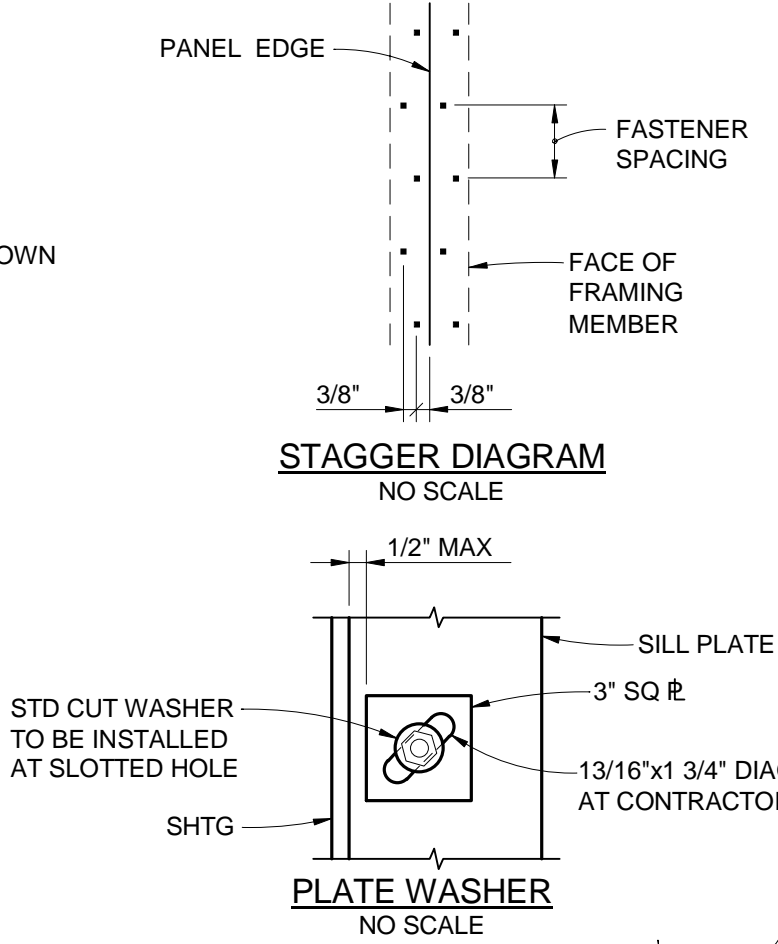
D3 SECOND FLOOR PLAN
1/8" = 1'-0"

3/29/2021 3:23:17 PM

PRELIMINARY - NOT FOR CONSTRUCTION

SHEAR WALL SCHEDULE (SFRS) REMARK 1,2,3,4,5,6,7,13,14							
TYPE	ALLOWABLE SHEAR (SERVICE LOAD)	RATED SHTG/ SIDING	EDGE/BOUNDARY FASTENING		FIELD FASTENING		REMARKS
			SCREWS	SCREWS	BOLTS/HILTI TITEN ANCHOR	SIMPSON SDS SCREWS	
(A)	678#/FT	SURE-BOARD SERIES 200, No. 22 Ga	No. 8 x 1 3/4" @ 6" OC STAGGERED	1'-0" OC	5/8" DIA AB @ 6" OC W/ 8" EMBED	@ 1'-0" OC	8, 9
(B)	922#/FT	SURE-BOARD SERIES 200, No. 22 Ga	No. 8 x 1 3/4" @ 4" OC STAGGERED	1'-0" OC	5/8" DIA AB @ 4" OC W/ 8" EMBED	@ 8" OC	8, 9
(C)	1092#/FT	SURE-BOARD SERIES 200, No. 22 Ga	No. 8 x 1 3/4" @ 3" OC STAGGERED	1'-0" OC	5/8" DIA AB @ 4" OC W/ 8" EMBED	@ 8" OC	8, 9
(D)	1253#/FT	SURE-BOARD SERIES 200, No. 22 Ga	No. 8 x 1 3/4" @ 2" OC STAGGERED	1'-0" OC	5/8" DIA AB @ 3" OC W/ 8" EMBED	@ 6" OC	8, 9
(E)	1710#/FT	SURE-BOARD SERIES 200, No. 22 Ga, 2 SIDES	No. 8 x 1 3/4" @ 2" OC STAGGERED	8" OC	--	@ 4" OC	10, 11, 12

- REMARKS
- FASTENING APPLIES TO ALL STUDS, TOP AND BOTTOM PLATES AND BLOCKING.
 - ANCHOR BOLT WASHER SHALL BE 0.229" x 3" SQ PLATE WASHER, SEE WASHER DETAIL.
 - MINIMUM BOTTOM TRACK FASTENING EDGE DISTANCE SHALL BE 5/8".
 - MINIMUM SIMPSON SDS SCREW EDGE DISTANCE SHALL BE 1".
 - SIMPSON SCREWS ARE SDS25600.
 - SHEATHING/SIDING SHALL BE EDGE FASTENED AT ALL PANEL EDGES, TOP AND BOTTOM TRACKS, HOLDDOWN STUDS AND BLOCKING LOCATIONS AS WELL AS OTHER LOCATIONS SHOWN IN THE DRAWINGS.
 - FASTENERS SHALL BE No. 8 SCREWS.
 - AT ALL ADJOINING PANEL EDGES, INSTALL 2-S600S162-54.
 - REQUIRES 2-S600S162-54 BOTTOM TRACK WITH STAGGERED SCREWS.
 - INSTALL BLOCKING AT ALL ADJOINING PANEL EDGES.
 - REQUIRES 2-S600S162-54 BOTTOM TRACK.
 - REQUIRES SPECIAL INSPECTION WHEN NAILING OR STAPLING AT 4" OR LESS.
 - SURE-BOARD SHALL BE SERIES 200B WHERE SPECIFIED ON THE ARCHITECTURAL PLANS. SEE ARCHITECTURAL PLANS FOR GYPSUM WALL TYPE TO BE USED ON SURE-BOARD.
 - SEE UES ER-126 FOR ALL SUREBOARD DETAILS AND REQUIREMENTS NOT NOTED.



DETAIL

NO SCALE

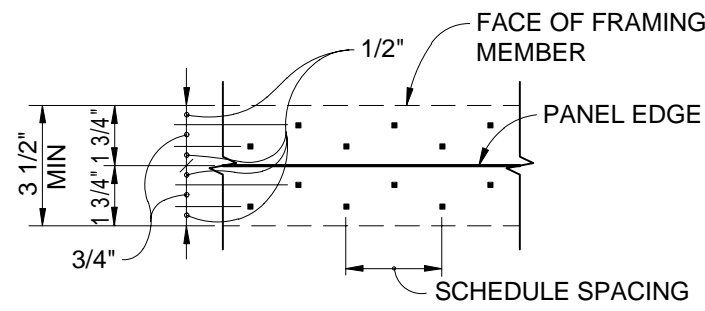
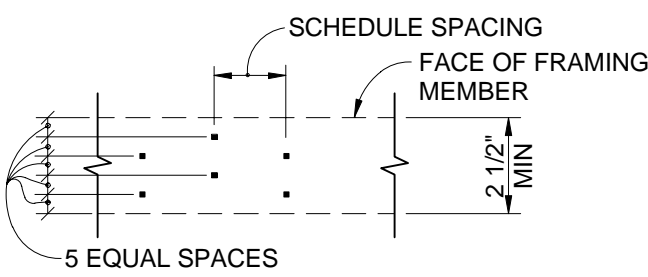
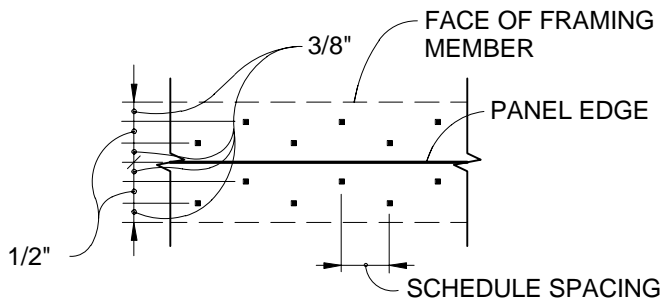
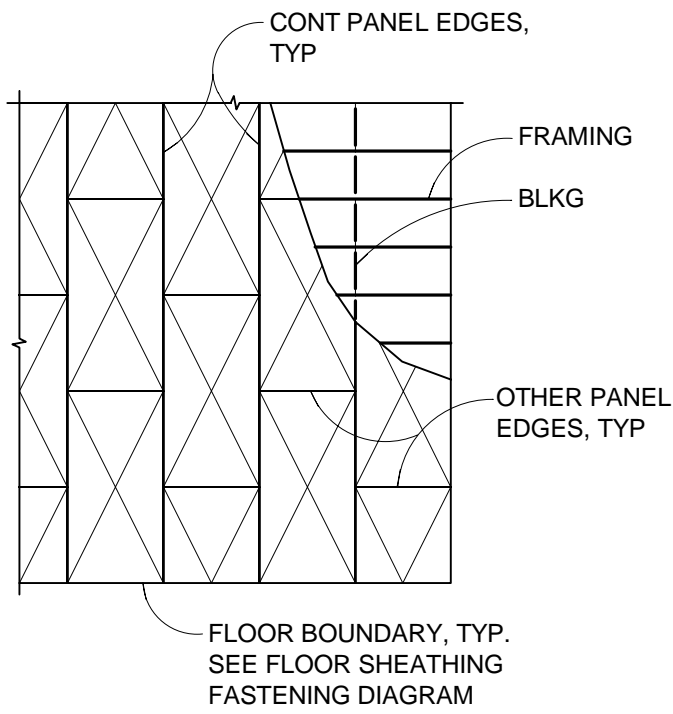
1

S1.7

FLOOR SHEATHING FASTENING SCHEDULE (SFRS) 1,2,3				
ZONE	FLOOR BOUNDARIES SCREWS	CONTINUOUS PANEL EDGE/BOUNDARY SCREWS	OTHER PANEL EDGES SCREWS	FASTENING NOTES
(A)	6" OC	6" OC	6" OC	4-7

FASTENING NOTES:

- FASTENERS AT SQUARE EDGES & SUPPORTED T&G EDGES SHALL BE No. 10 SCREWS.
- FASTEN EDGES OF EACH SHEATHING PANEL TO ALL STEEL BEAMS W/ FASTENERS @ 4" OC UNLESS HEAVIER FASTENING IS CALLED ELSEWHERE.
- FIELD FASTENING SHALL BE @ 12" OC FOR SCREWS.
- INSTALL FULL LENGTH BOX STUD BLOCKING AT ALL UNSUPPORTED SQUARE PANEL EDGES.
- INSTALL BOX STUD FRAMING/BLOCKING AT FLOOR BOUNDARIES AND AT ALL ADJOINING PANEL EDGES.
- SURE-BOARD SHALL BE SERIES 200S WITH 11/16" FIBER BOARD CONCRETE TO BE USED WITH 20 Ga SHEET METAL SURE-BOARD.
- SEE UES ER-185 FOR ALL SURE-BOARD DETAILS AND REQUIREMENTS NOT NOTED.

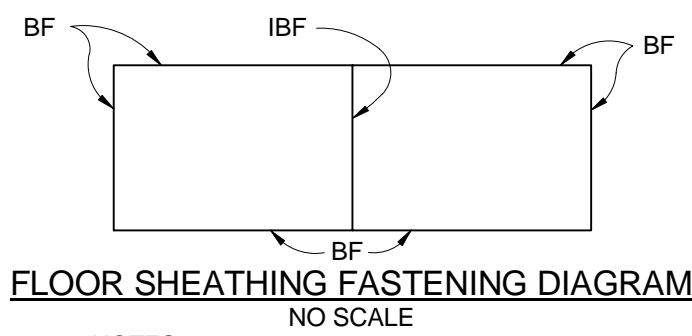


DETAIL

NO SCALE

4

S1.7



NOTES:

- BF DENOTES BOUNDARY FASTENING
IBF DENOTES BOUNDARY FASTENING FROM EACH SIDE ADJACENT TO THE BOUNDARY

HOLDOWN/SEISMIC TIE SCHEDULE (SFRS)				
TYPE	HOLDOWN ANCHOR	ANCHOR ROD DIA	EMBED LENGTH	HOLDOWN POST (UON)/BLKG
1	SIMPSON CS16	--	--	54 MIL STUD
2	SIMPSON CS20	--	--	33 MIL STUD
3	SIMPSON S/HDU4	5/8"	14"	2-S600S162-43
4	SIMPSON S/HDU6	5/8"	14"	2-S600S162-43
5	SIMPSON S/HDU9	7/8"	16"	2-S600S162-43
6	SIMPSON S/HDU11	7/8"	16"	2-S600S162-43

NOTES:

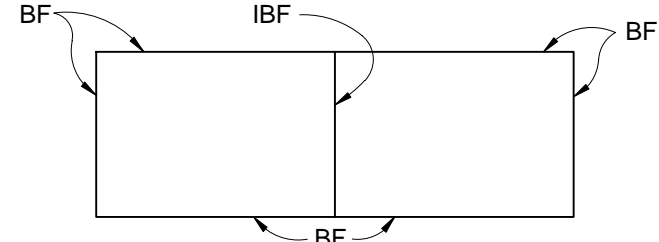
- SEE HOLDOWN DETAILS FOR REQ'D HOLDOWN GAP AND ANCHOR ROD PROJECTION.
- ALL HOLDOWNS SHALL BE CONTINUOUS TO FOUNDATION OR BEAM BELOW.
- INSTALL HOLDOWNS & TIES PER MANUFACTURER INSTRUCTIONS. ALL HOLDOWN BOLTS SHALL BE TIGHTENED PRIOR TO INSPECTION.
- ANCHOR RODS SHALL BE THREADED FULL LENGTH.
- CENTER STRAP ON BLOCKING.
- SPICE AS REQUIRED. SEE DETAIL 6/S1.5.
- MUST HAVE MINIMUM EDGE DISTANCE OF 1 1/2" FROM EDGE OF BLKG TO SCREW.

DETAIL

NO SCALE

2

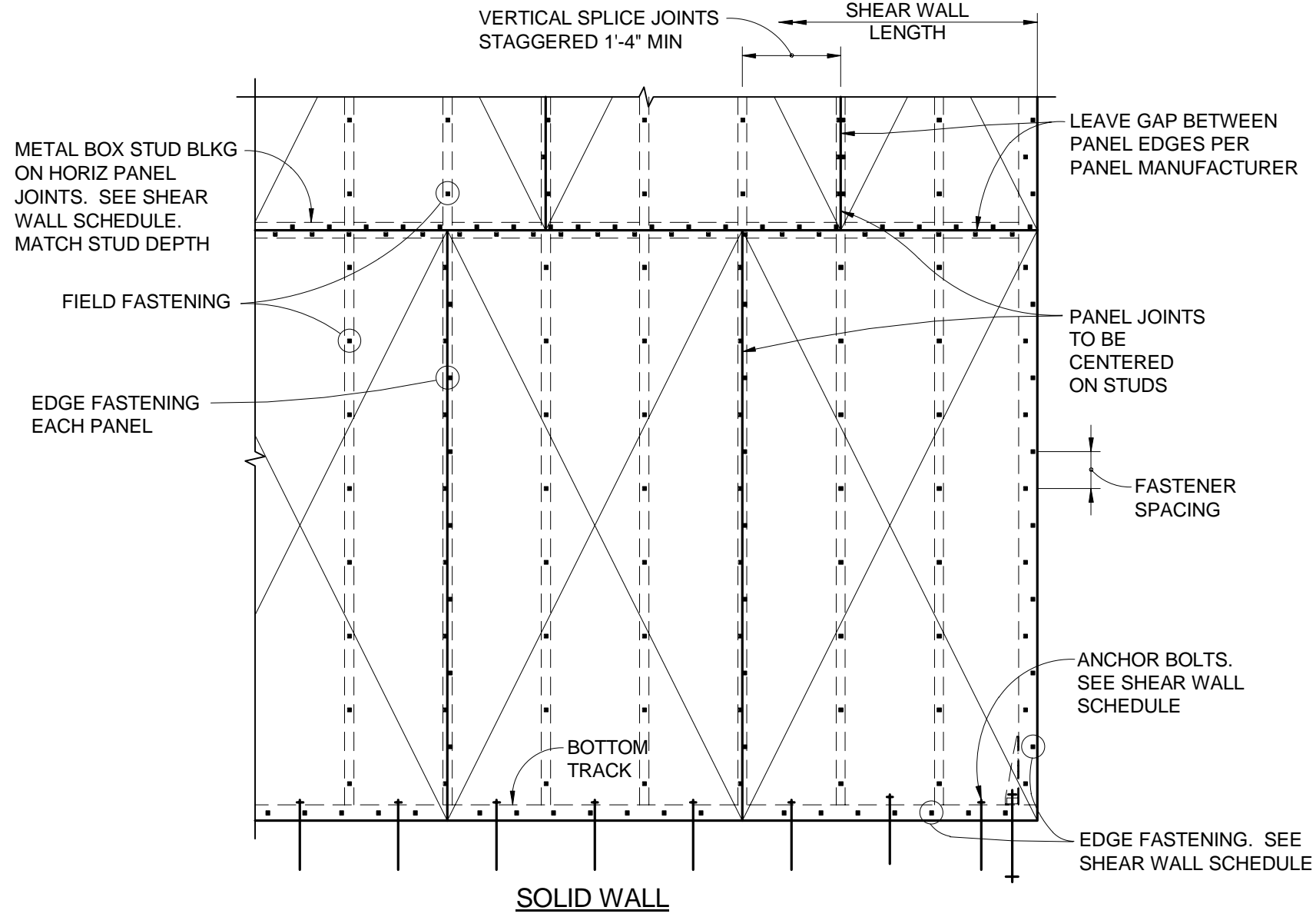
S1.7



ROOF SHEATHING FASTENING DIAGRAM

NOTES:

- BF DENOTES BOUNDARY FASTENING
IBF DENOTES BOUNDARY FASTENING FROM EACH SIDE ADJACENT TO THE BOUNDARY



NOTES:

- MAXIMUM OPENING HEIGHT "h" IS 5'-0" TYPICAL. COORDINATE WITH ARCHITECT.
- MINIMUM TOP SPANDREL HEIGHT "t" IS 2'-0" MINIMUM BOTTOM SPANDREL HEIGHT "b" IS 2'-6", TYP. COORDINATE WITH ARCHITECT.

TYPICAL SHEAR WALL ELEVATION

NO SCALE

3

S1.7

architect:

MARY MCGRATH | ARCHITECTS

1212 BROADWAY, SUITE 1700
OAKLAND, CA 94612
phone : 510.208.9400
www.marymcgratharchitects.com

consultants:

BIGGS CARDOSA ASSOCIATES INC
STRUCTURAL ENGINEERS
40 Federal Street
San Francisco, CA 94107
415-986-1911

BCA

no.	description	date
100%	BRIDGING DOCUMENTS	4/15/2021
4	ADDENDA #4	7/1/2021

phase:

BRIDGING DOCUMENTS



CITY OF RANCHO CUCAMONGA

FIRE STATION
178

TOWN CENTER DR.
RANCHO CUCAMONGA, CA
91730

drawing title:

TYPICAL DETAILS No.
7

project no.:

2811.01

sheet no.:

S1.7

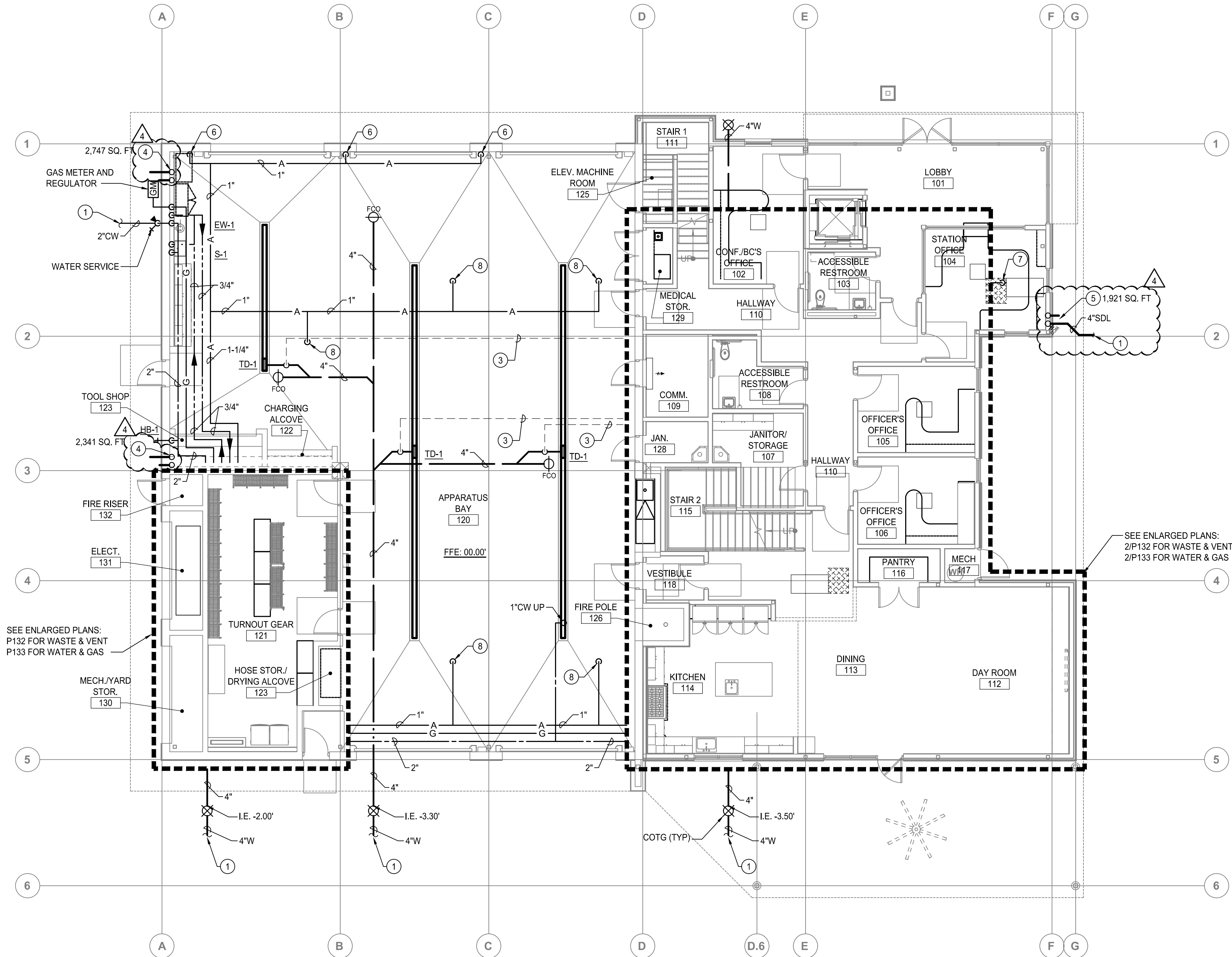
© Mary McGrath Architects | All Rights Reserved

PLAN CHECK SET/NOT FOR CONSTRUCTION (6/30/21)

PRELIMINARY - NOT FOR CONSTRUCTION

20200266 6/30/2021 4:13:39 AM

S:\Shared\Jobs\Consulting Engineering_Jobs\San Jose\San Jose Fire Station 178\Fire Station 178\Plumbing\Plumbing Plan.dwg User: jmcgrath Jun 30, 2021 1:15pm



PLUMBING OVERALL FIRST FLOOR PLAN

SCALE: 1/8" = 1'-0"

KEY NOTES	
APPLICABLE TO THIS SHEET ONLY	
1	SEE CIVIL PLANS FOR CONTINUATION OF PIPING.
2	INVERT ELEVATION WHERE THE BUILDING DRAIN AND BUILDING SEWER MEET SHALL BE -3.30' MINIMUM BELOW THE FINISHED FLOOR ELEVATION.
3	2" VENT BELOW FLOOR.
4	4" STORM DRAIN AND OVERFLOW FROM ABOVE. TERMINATE PIPING THROUGH WALL 6" ABOVE FINISHED GRADE WITH WATTS #RD-940 DOWNSPOUT.
5	4" STORM DRAIN AND OVERFLOW FROM ABOVE. PROVIDE WALL CLEANOUT ON STORM DRAIN LEADER AT 90° CONNECTION BEFORE PIPING ROUTES UNDERGROUND. CONTINUE UNDERGROUND AND THROUGH CURB WITH CURB-O-LET OR SIMILAR PRODUCT. TERMINATE OVERFLOW PIPING THROUGH WALL 6" ABOVE FINISHED GRADE WITH WATTS #RD-940 DOWNSPOUT.
6	3/4" AIR DOWN. TERMINATE NO LOWER THAN 42" ABOVE FINISH FLOOR WITH QUICK DISCONNECT. COORDINATE WITH OWNER FOR CONNECTOR TYPE.
7	3/4" CONDENSATE CONNECTION TO MECHANICAL EQUIPMENT.
8	3/4" AIR DOWN TO PLYMOVENT SYSTEM. PROVIDE CONNECTION TO EQUIPMENT PER THE MANUFACTURERS INSTRUCTIONS
PLUMBING GENERAL NOTES	
APPLICABLE TO THIS SHEET ONLY	
1	SEE PLUMBING FIXTURE SCHEDULE FOR BRANCH PIPE SIZING.
2	PROVIDE ANGLE STOPS FOR ALL PLUMBING FIXTURE BRANCH PIPING LINES.
3	SEE GAS RISER DIAGRAM ON SHEET P002 FOR SIZING, CALCULATIONS AND EQUIPMENT LOADS.
4	SLOPE SANITARY WASTE PIPING MIN 2% IN DIRECTION OF FLOW.
5	SLOPE VENT PIPING UP TOWARDS VTR MIN 1%.
6	SLOPE CONDENSATE PIPING MIN 1% IN DIRECTION OF FLOW.
7	ALL ROOMS WITH FLOOR DRAINAGE MUST HAVE FLOORS SLOPED TOWARD DRAIN. SEE ARCHITECTURAL PLANS FOR REQUIRED SLOPE.
8	PROVIDE CLEANOUTS IN ALL LOCATIONS SHOWN. COORDINATE ALL WALL CLEANOUTS WITH PLUMBING FIXTURES, CASEWORK, AND ARCHITECTURAL ELEVATIONS.
9	REFER TO MECHANICAL SHEETS FOR LOCATIONS OF MECHANICAL EQUIPMENT AND DUCTWORK. COORDINATE ALL WORK TO FIT IN AVAILABLE SPACE.
10	PLUMBING VENTS SHALL TERMINATE NOT LESS THAN 6" ABOVE THE ROOF, NOR LESS THAN 12" FROM A VERTICAL SURFACE. MAINTAIN 10'-0" CLEARANCE FROM BUILDING AIR INTAKES.
11	HORIZONTAL RAIN WATER PIPING HAS BEEN SIZED PER 2019 CPC TABLE 1103.2 USING A RAINFALL RATE OF 3"(IN/H) & 1/4"/FT SLOPE

architect:



MARY MCGRATH ARCHITECTS

1212 BROADWAY, SUITE 1700
OAKLAND, CA 94612
phone: 510.208.9400
www.marymcgratharchitects.com

consultants:



3C | ENGINEERING

SMARTER BUILDINGS BY DESIGN

805.540.3363 WWW.3CENG.COM

1500 PALM ST. SAN LUIS OBISPO, CA 93401

BY 3C Engineering, Inc., ALL COMMON LAW COPYRIGHT AND OTHER PROPERTY RIGHTS RESERVE THIS DOCUMENT AS AN ORIGINAL AND UNPUBLISHED WORK PRODUCT. THIS WORK SHALL NOT BE REPRODUCED, COPIED, DISCLOSED OR USED IN CONNECTION WITH ANY WORK OR PROJECT OTHER THAN THE SPECIFIC PROJECT FOR WHICH IT HAS BEEN PREPARED. WORK SHALL BE ASSIGNED TO ANY THIRD PARTY WITHOUT FIRST OBTAINING THE EXPRESS WRITTEN CONSENT OF 3C Engineering, Inc. THIS DOCUMENT SHALL CONSTITUTE CONCLUSIVE EVIDENCE OF ACCEPTANCE OF THESE RESTRICTIONS.

no.	description	date
1	100% BRIDGING DOCUMENTS	04/15/2021
1	ADDENDA #1	06/10/2021
4	ADDENDA #4	07/01/2021

phase:

BRIDGING DOCUMENTS



CITY OF RANCHO
CUCAMONGA

FIRE STATION 178

TOWN CENTER DR., RANCHO
CUCAMONGA, CA 91730

drawing title:

PLUMBING OVERALL
FIRST FLOOR PLAN

project no.:

2811.01

sheet no.:

P131

© Mary McGrath Architects | All Rights Reserved

6/30/2021 1:15:48 PM

5

4

3

2

1

5

4

3

2

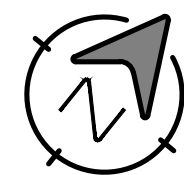
1

1 ENLARGED WASTE AND VENT

PLUMBING ENLARGED FIRST FLOOR PLAN - WASTE & VENT

2 ENLARGED WASTE AND VENT

SCALE: 1/4" = 1'-0"



KEY NOTES

APPLICABLE TO THIS SHEET ONLY

- 3/4" CONDENSATE CONNECTION TO MECHANICAL EQUIPMENT.
- 3/4" CONDENSATE DOWN IN WALL. TERMINATE TO FIXTURE TAILPIECE
- 2" VENT BELOW FLOOR. SEE P131 FOR CONTINUATION OF PIPING.
- 1-1/2" V BELOW FLOOR
- 4" STORM DRAIN AND OVERFLOW FROM ABOVE. PROVIDE WALL CLEANOUT ON STORM DRAIN LEADER AT 90° CONNECTION BEFORE PIPING ROUTES UNDERGROUND. CONTINUE UNDERGROUND AND THROUGH CURB WITH CURB-O-LET OR SIMILAR PRODUCT. TERMINATE OVERFLOW PIPING THROUGH WALL 6" ABOVE FINISHED GRADE WITH WATTS RD-940 DOWNSPOUT.
- 3/4" CONDENSATE CONNECTION TO MECHANICAL EQUIPMENT.
- 3/4" CONDENSATE DOWN IN WALL. TERMINATE TO FLOOR SINK WITH 90 AND PROVIDE MINIMUM 1" AIR GAP.
- 1-1/2" V BELOW WINDOW
- PROVIDE DECK MOUNTED AIR GAP FITTING FOR DISHWASHER DRAINAGE. CONNECT TO GARBAGE DISPOSAL OR FIXTURE TAILPIECE. TROUGH DRAIN SHALL BE 36"L x 12"W x 16"D. SLOPE BOTTOM OF TROUGH DRAIN TOWARD OUTLET. 2" DIFFERENCE BETWEEN THE HIGH AND LOW SIDE OF THE DRAIN. PROVIDE WITH STAINLESS STEEL LINT SCREEN. 4" OUTLET AND 2" VENT.
-

PLUMBING GENERAL NOTES

APPLICABLE TO THIS SHEET ONLY

- SEE PLUMBING FIXTURE SCHEDULE FOR BRANCH PIPE SIZING.
- SLOPE SANITARY WASTE PIPING MIN 2% IN DIRECTION OF FLOW.
- SLOPE VENT PIPING UP TOWARDS VTR MIN 1%.
- SLOPE CONDENSATE PIPING MIN 1% IN DIRECTION OF FLOW.
- ALL ROOMS WITH FLOOR DRAINAGE MUST HAVE FLOORS SLOPED TOWARD DRAIN. SEE ARCHITECTURAL PLANS FOR REQUIRED SLOPE.
- PROVIDE CLEANOUTS IN ALL LOCATIONS SHOWN. COORDINATE ALL WALL CLEANOUTS WITH PLUMBING FIXTURES, CASEWORK, AND ARCHITECTURAL ELEVATIONS.
- REFER TO MECHANICAL SHEETS FOR LOCATIONS OF MECHANICAL EQUIPMENT AND DUCTWORK. COORDINATE ALL WORK TO FIT IN AVAILABLE SPACE.
- HORIZONTAL RAIN WATER PIPING HAS BEEN SIZED PER 2019 CPC TABLE 1103.2 USING A RAINFALL RATE OF 3"(IN/H) & 14"/FT SLOPE

architect:



MARY MCGRATH ARCHITECTS

1212 BROADWAY, SUITE 1700
OAKLAND, CA 94612
phone: 510.208.9400
www.marymcgratharchitects.com

consultants:



3C | ENGINEERING

SMARTER BUILDINGS BY DESIGN

805.540.3363 WWW.3CENG.COM

9100 PALM ST. SAN LUIS OBISPO, CA 93401

BY 3C Engineering, Inc., ALL COMMON LAW COPYRIGHT AND OTHER PROPERTY RIGHTS RESERVE THIS DOCUMENT AS AN ORIGINAL AND UNPUBLISHED WORK PRODUCT. THIS WORK SHALL NOT BE REPRODUCED, COPIED, DISCLOSED OR USED IN CONNECTION WITH ANY WORK OR PRODUCT OTHER THAN THE SPECIFIC PROJECT FOR WHICH IT HAS BEEN PREPARED. WORK SHALL BE ASSIGNED TO ANY THIRD PARTY WITHOUT FIRST OBTAINING THE EXPRESS WRITTEN CONSENT OF 3C Engineering, Inc. THE DOCUMENT SHALL CONSTITUTE CONCLUSIVE EVIDENCE OF ACCEPTANCE OF THESE RESTRICTIONS.

no.	description	date
	100% BRIDGING DOCUMENTS	04/15/2021
1	ADDENDA #1	06/10/2021
4	ADDENDA #4	07/01/2021

phase:

BRIDGING DOCUMENTS



CITY OF RANCHO
CUCAMONGA

FIRE STATION 178

TOWN CENTER DR., RANCHO
CUCAMONGA, CA 91730

drawing title:

PLUMBING ENLARGED
FIRST FLOOR PLAN -
WASTE & VENT

project no.:

2811.01


sheet no.:

P132

© Mary McGrath Architects | All Rights Reserved

6/30/2021 1:15:59 PM

S:\Shared\Jobs\Consulting Engineering Jobs\Rancho Cucamonga Fire Station 178\Fire Station 178\Engineering\Rancho Cucamonga Plumbing Plan.dwg User:mrj Jun 30 2021 1:15pm



5	SLOPE CONDENSATE PIPING MIN 1% IN DIRECTION OF FLOW.
6	REFER TO MECHANICAL SHEETS FOR LOCATIONS OF MECHANICAL EQUIPMENT AND DUCTWORK. COORDINATE ALL WORK TO FIT IN AVAILABLE SPACE.



1 ENLARGED WASTE AND VENT

PLUMBING ENLARGED SECOND FLOOR PLAN



2 ENLARGED WATER AND GAS

4

KEY NOTES

APPLICABLE TO THIS SHEET ONLY

- | | |
|---|---|
| 1 | 1-1/4" COLD WATER FROM BELOW |
| 2 | 3/4" HOT WATER AND 3/4" COLD WATER FROM BELOW |
| 3 | 1/2" HOT WATER AND 1/2" COLD WATER FROM BELOW |
| 4 | 3/4" CONDENSATE CONNECTION TO MECHANICAL EQUIPMENT. |
| 5 | 3/4" CONDENSATE DOWN IN WALL. TERMINATE TO FIXTURE TAILPIECE. |
| 6 | 4" STORM DRAIN AND OVERFLOW FROM ABOVE AND DOWN. |

PLUMBING GENERAL NOTES

APPLICABLE TO THIS SHEET ONLY

- | | |
|---|---|
| 1 | SEE PLUMBING FIXTURE SCHEDULE FOR BRANCH PIPE SIZING. |
| 2 | SLOPE SANITARY WASTE PIPING MIN 2% IN DIRECTION OF FLOW. |
| 3 | PROVIDE ANGLED STOPS FOR ALL PLUMBING FIXTURE BRANCH PIPING LINES. |
| 4 | SLOPE VENT PIPING UP TOWARDS VTR MIN 1%. |
| 5 | SLOPE CONDENSATE PIPING MIN 1% IN DIRECTION OF FLOW. |
| 6 | ALL ROOMS WITH FLOOR DRAINAGE MUST HAVE FLOORS SLOPED TOWARD DRAIN. SEE ARCHITECTURAL PLANS FOR REQUIRED SLOPE. |
| 7 | PROVIDE CLEANOUTS IN ALL LOCATIONS SHOWN. COORDINATE ALL WALL CLEANOUTS WITH PLUMBING FIXTURES, CASEWORK, AND ARCHITECTURAL ELEVATIONS. |
| 8 | REFER TO MECHANICAL SHEETS FOR LOCATIONS OF MECHANICAL EQUIPMENT AND DUCTWORK. COORDINATE ALL WORK TO FIT IN AVAILABLE SPACE. |
| 9 | PLUMBING VENTS SHALL TERMINATE NOT LESS THAN 6" ABOVE THE ROOF. NOT LESS THAN 12" FROM A VERTICAL SURFACE. MAINTAIN 10'-0" CLEARANCE FROM BUILDING AIR INTAKES. |

architect:



MARY MCGRATH | ARCHITECTS

1212 BROADWAY, SUITE 1700
OAKLAND, CA 94612
phone: 510.208.9400
www.marymcgratharchitects.com

consultants:



3C | ENGINEERING

SMARTER BUILDINGS BY DESIGN

☎ 805.540.3363 • WWW.3CENG.COM

9 1500 PALM ST. SAN LUIS OBISPO, CA 9340

BY 3C Engineering, Inc., ALL COMMON LAW COPYRIGHT AND OTHER PROPERTY RIGHTS RESERVE THIS DOCUMENT AS AN ORIGINAL AND UNPUBLISHED WORK PRODUCT. THIS WORK SHALL NOT BE DUPLICATED, COPIED, DISCLOSED OR USED IN CONNECTION WITH ANY WORK OR PROJECT OTHER THAN THE SPECIFIC PROJECT FOR WHICH IT HAS BEEN PREPARED, NOR SHALL IT BE ASSIGNED TO ANY THIRD PARTY WITHOUT FIRST OBTAINING THE EXPRESS WRITTEN CONSENT OF VISUAL CONTACT. THIS DOCUMENT SHALL CONSTITUTE CONCLUSIVE EVIDENCE OF ACCEPTANCE OF THESE RESTRICTIONS.

no.	description	date
	100% BRIDGING DOCUMENTS	04/15/2002
1	ADDENDA #1	06/10/2002
4	ADDENDA #4	07/01/2002

phase:

BRIDGING DOCUMENTS

CITY OF RANCHO
CUCAMONGA

FIRE STATION 178

TOWN CENTER DR., RANCHO
CUCAMONGA, CA 91730

drawing title:

PLUMBING ENLARGED SECOND FLOOR PLAN

project no.:

2811.01

sheet no.:

P135

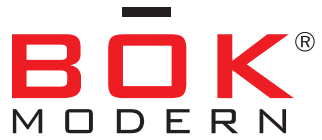
© Mary McGrath Architects | All Rights Reserved

11/30/2021 1:17:10 PM



8 HORIZONTAL RAIN WATER PIPING HAS BEEN SIZED PER 2019 CPC T
1103.2 USING A RAINFALL RATE OF 3"(IN/H) & 1/4"/FT SLOPE

© Mary McGrath Architects | All Rights Reserved



BLADE FENCE POST FENCE

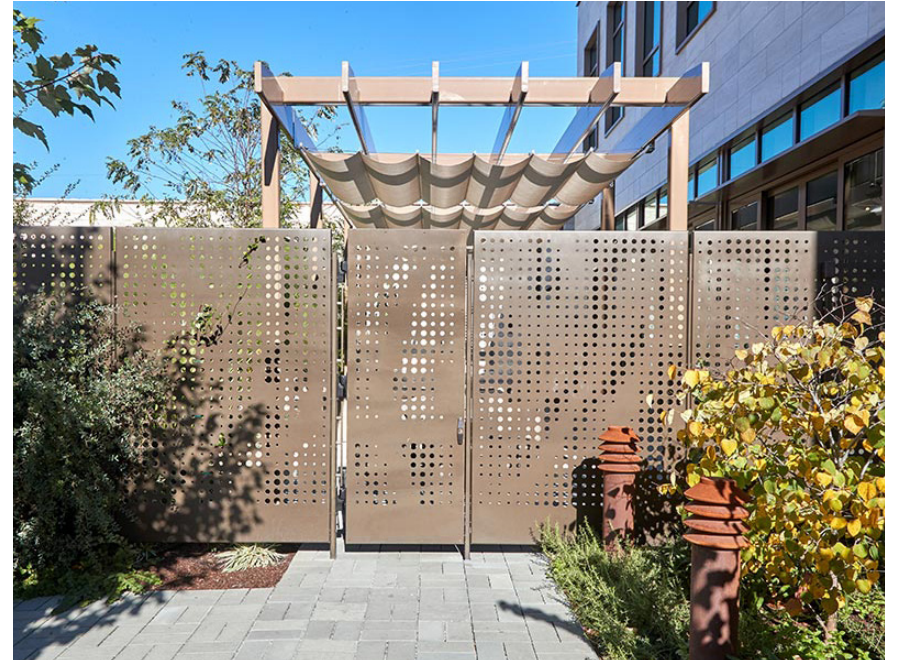
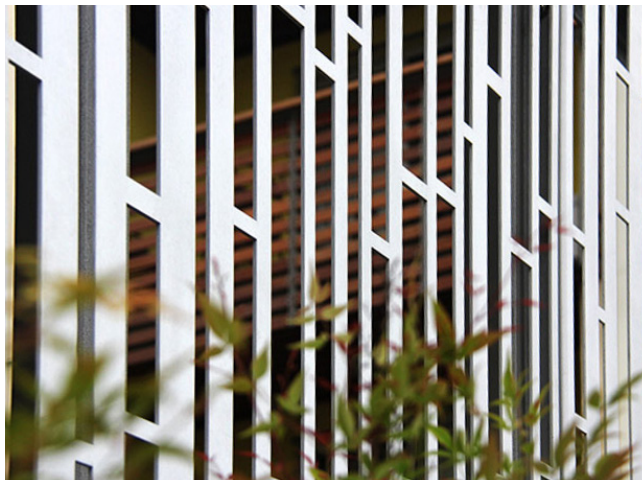
MODULAR FENCE

Our Blade and Post Fence uses a thin blade for lateral support rather than a heavy post. Providing a nearly seamless look, the result is a very contemporary appearance constructed in solid metal or with a virtually infinite array of patterns.

NOTE: Available in 4', 6' and 8' tall

These drawings can not be used for the purposes of soliciting, negotiating, procuring, fabricating or otherwise obtaining quotes from other vendors. They are the sole and absolute property of BOK Modern and may only be used by or under license from BOK Modern.

Any reproduction, distribution, modification, public display or representation of the content in these drawings, in part or as a whole, in any medium, without the prior express written consent of BOK Modern LLC. is strictly prohibited and may result in legal action.





BLADE FENCE POST FENCE

MODULAR FENCE

BOKMODERN.COM

For any questions please call
415.749.6500 X 295

TYPICAL DETAILS



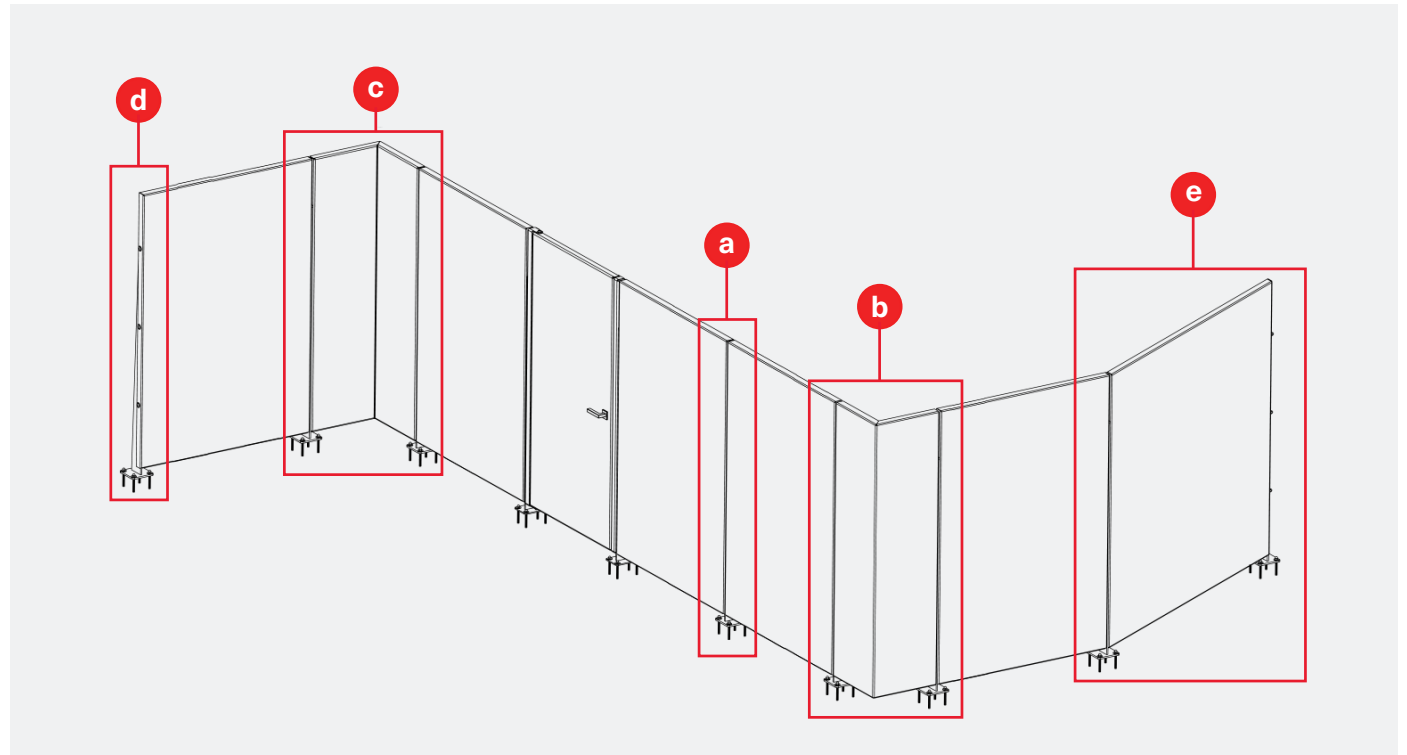
DETAIL KEY

- Ⓐ Typ Connection
- Ⓑ Outside Corner
- Ⓒ Inside Corner

BLADE FENCE POST FENCE

MODULAR FENCE

TYPICAL DETAILS



DETAIL KEY

- (a) Typ Connection
- (b) Outside Corner
- (c) Inside Corner
- (d) End Connection
- (e) Slope

BOKMODERN.COM

For any questions please call
415.749.6500 X 295



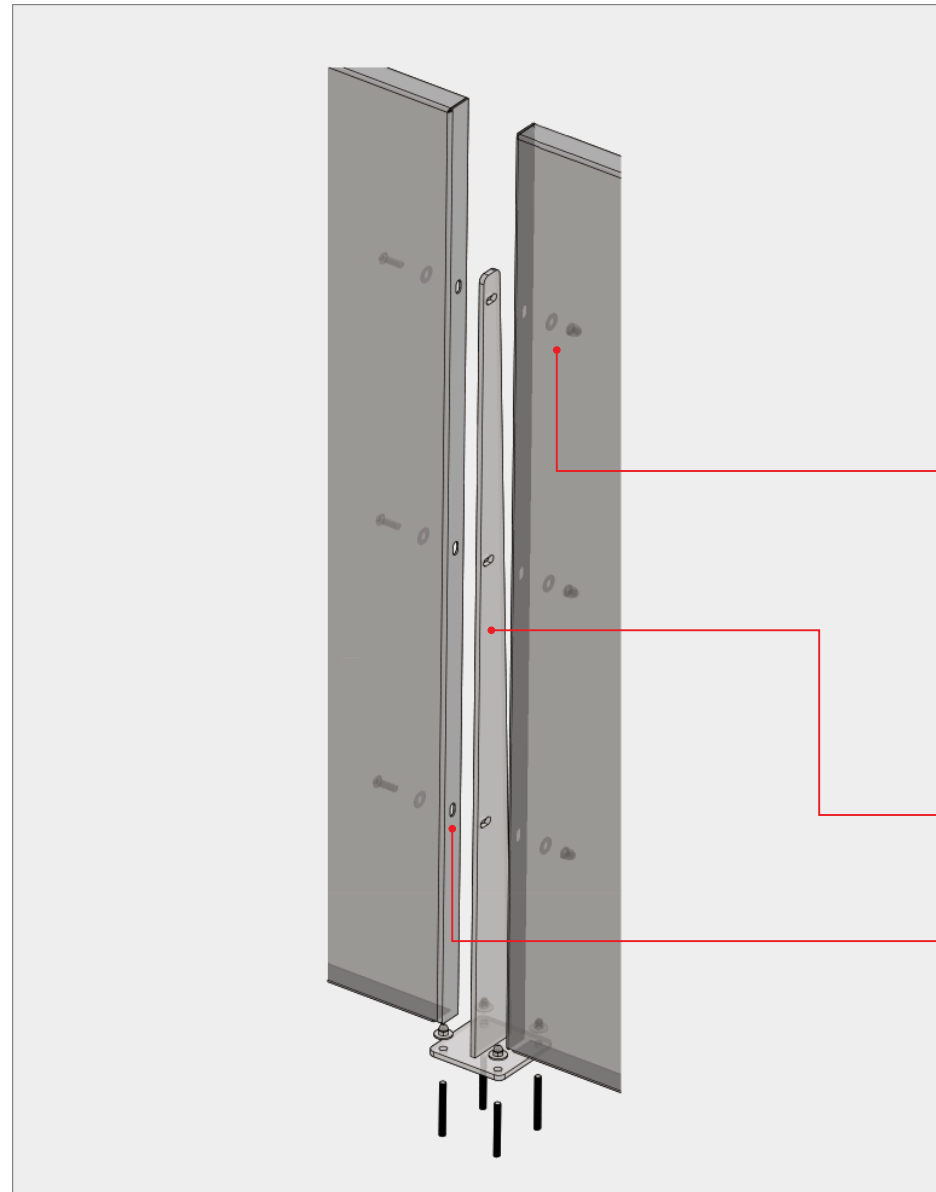
BLADE FENCE POST FENCE

MODULAR FENCE

BOKMODERN.COM

For any questions please call
415.749.6500 X 295

TYPICAL DETAILS

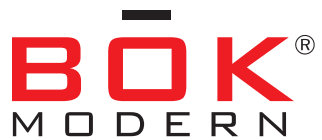


a TYP. CONNECTION

Fence panel by
BÖK Modern

Blade bracket by
BÖK Modern

1/2"-13 Socket-head
Button cap hardware
Assembly by BÖK Modern



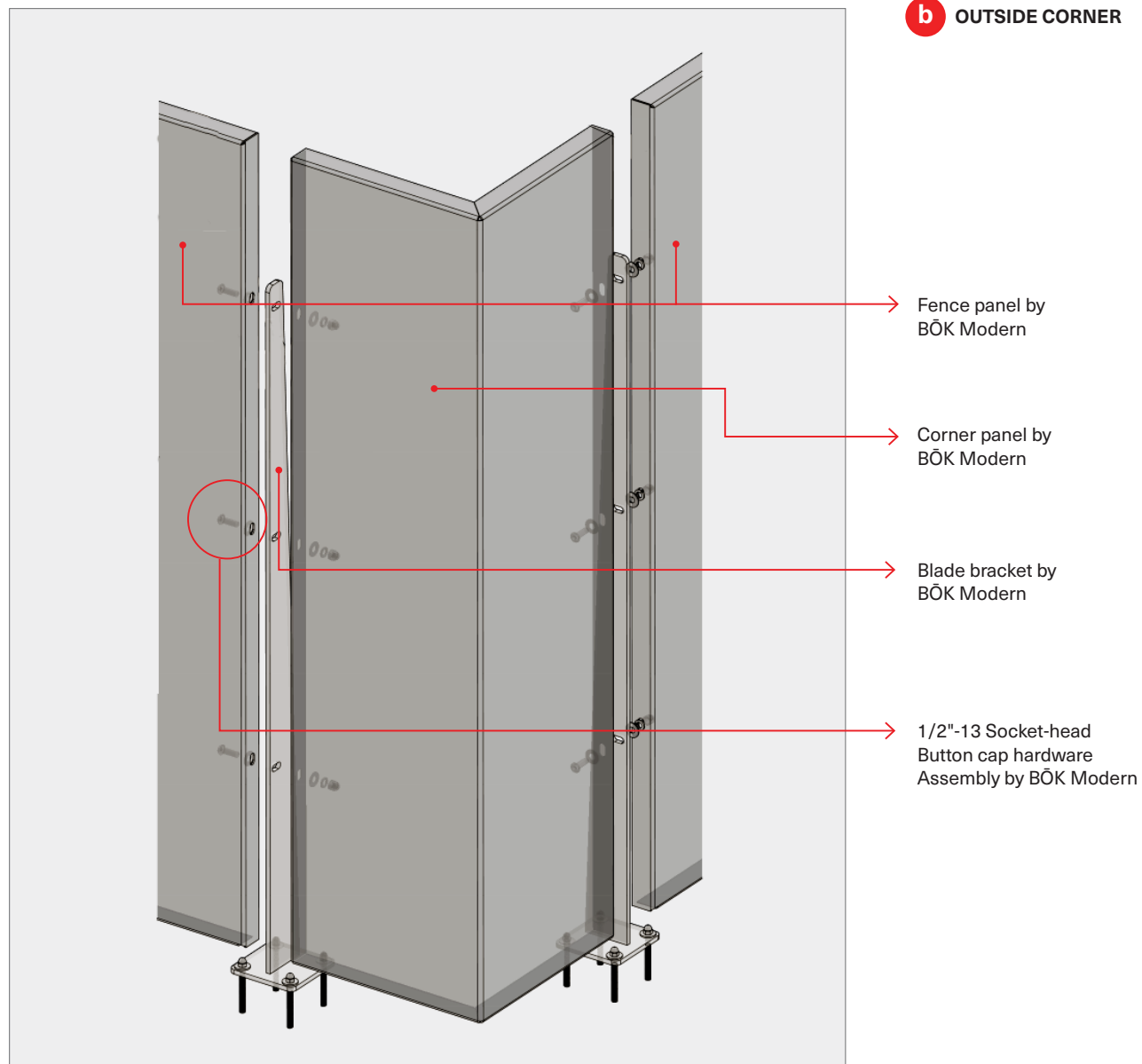
BLADE FENCE POST FENCE

MODULAR FENCE

BOKMODERN.COM

For any questions please call
415.749.6500 X 295

TYPICAL DETAILS





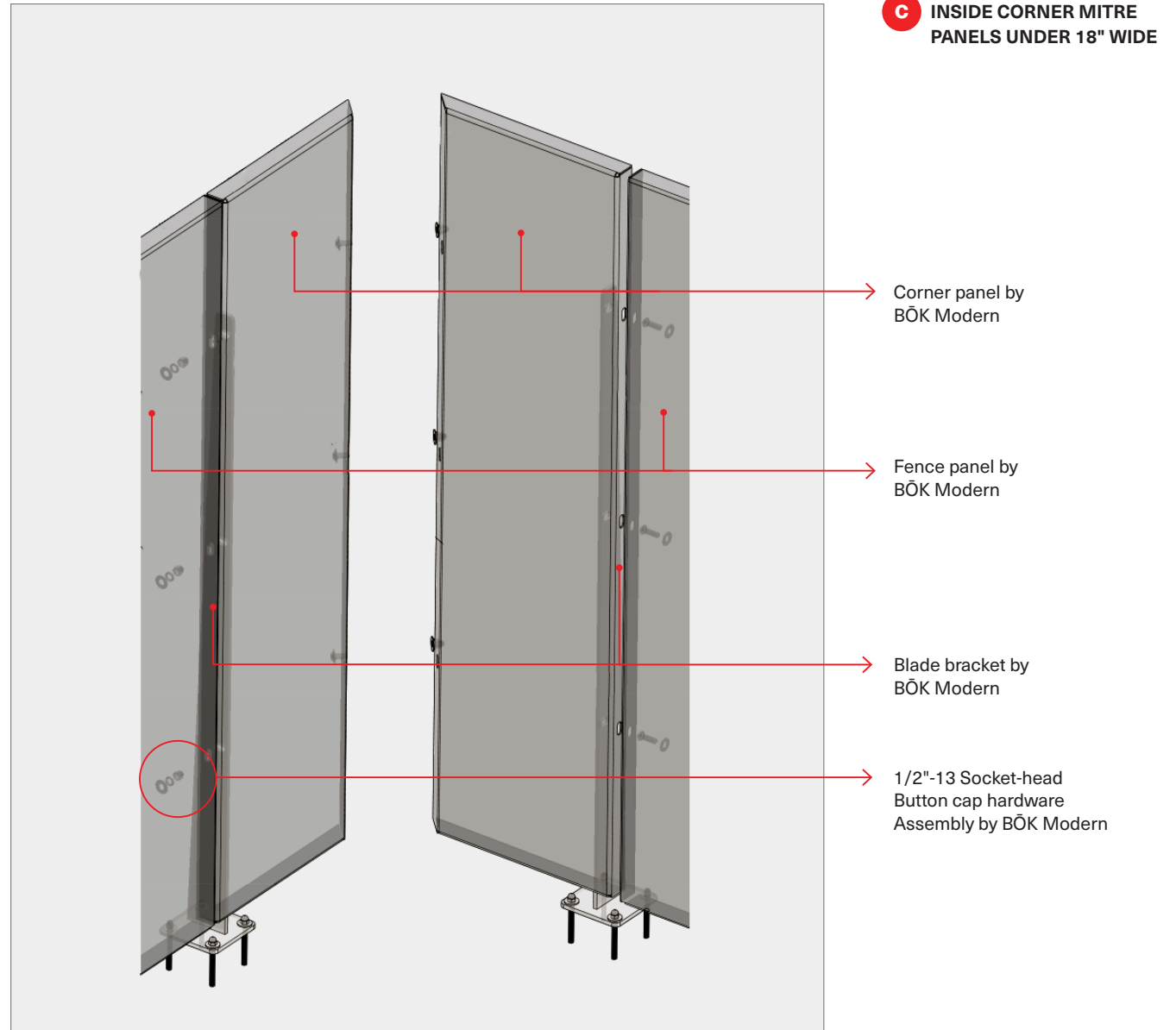
BLADE FENCE POST FENCE

MODULAR FENCE

BOKMODERN.COM

For any questions please call
415.749.6500 X 295

TYPICAL DETAILS





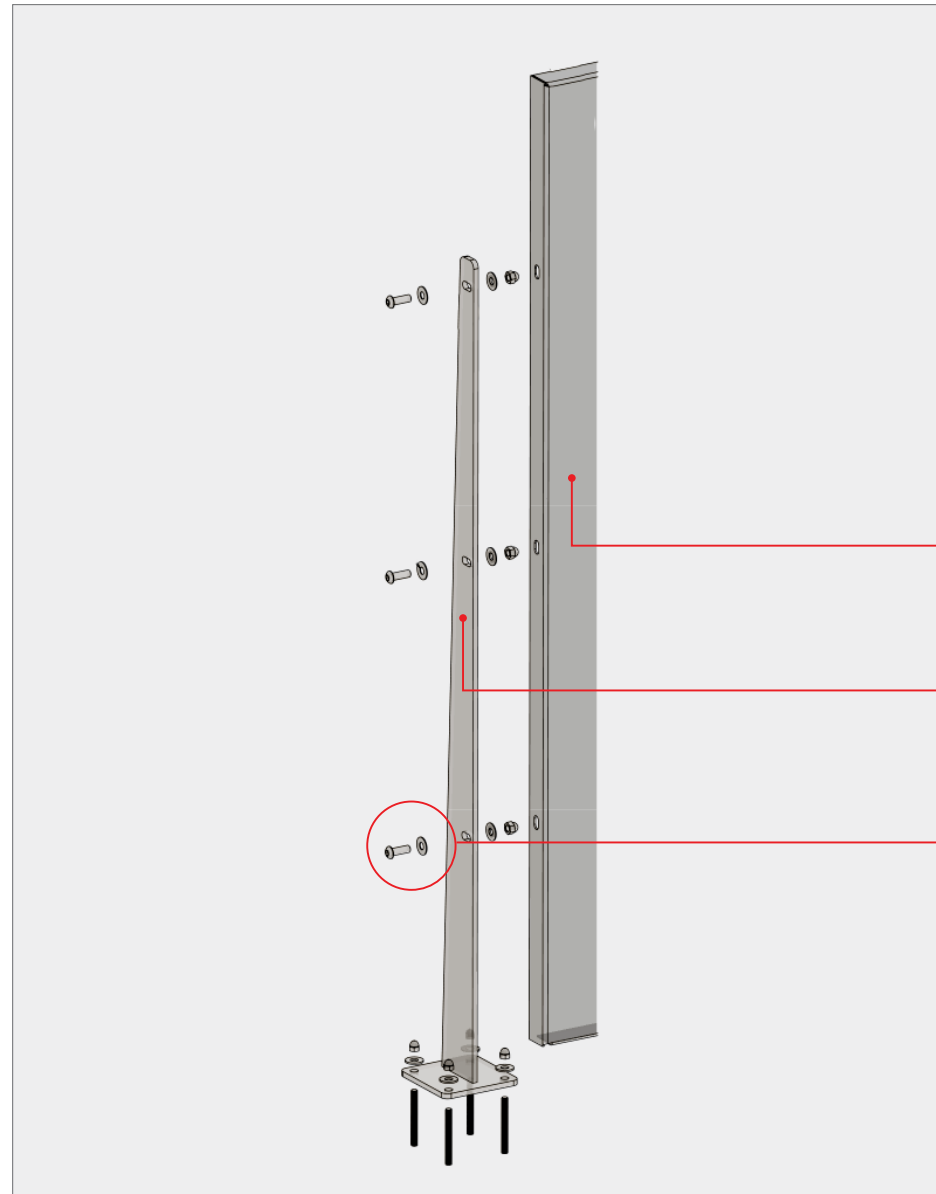
BLADE FENCE POST FENCE

MODULAR FENCE

BOKMODERN.COM

For any questions please call
415.749.6500 X 295

TYPICAL DETAILS



C END CONNECTION

Fence panel by
BÖK Modern

Blade bracket by
BÖK Modern

1/2"-13 Socket-head
Button cap hardware
Assembly by BÖK Modern



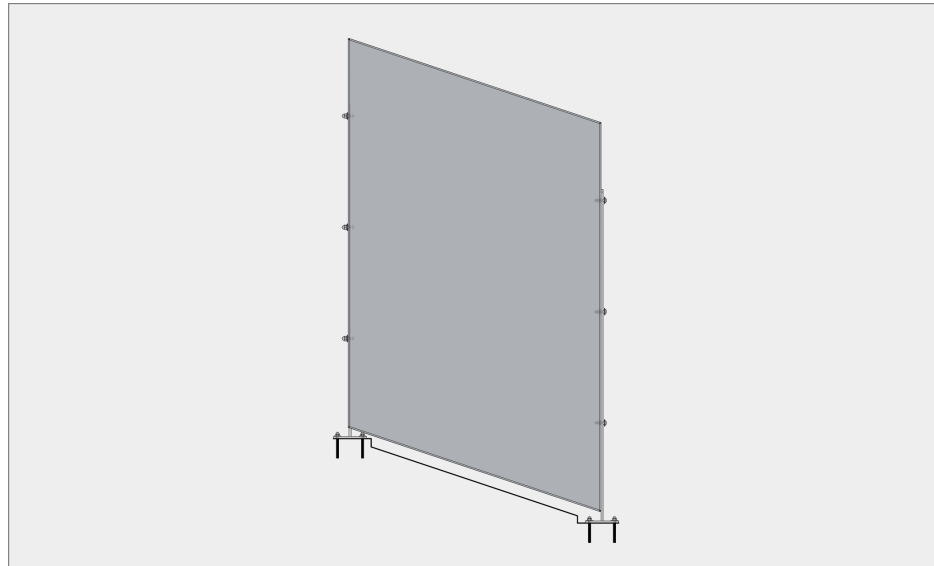
BLADE FENCE POST FENCE

MODULAR FENCE

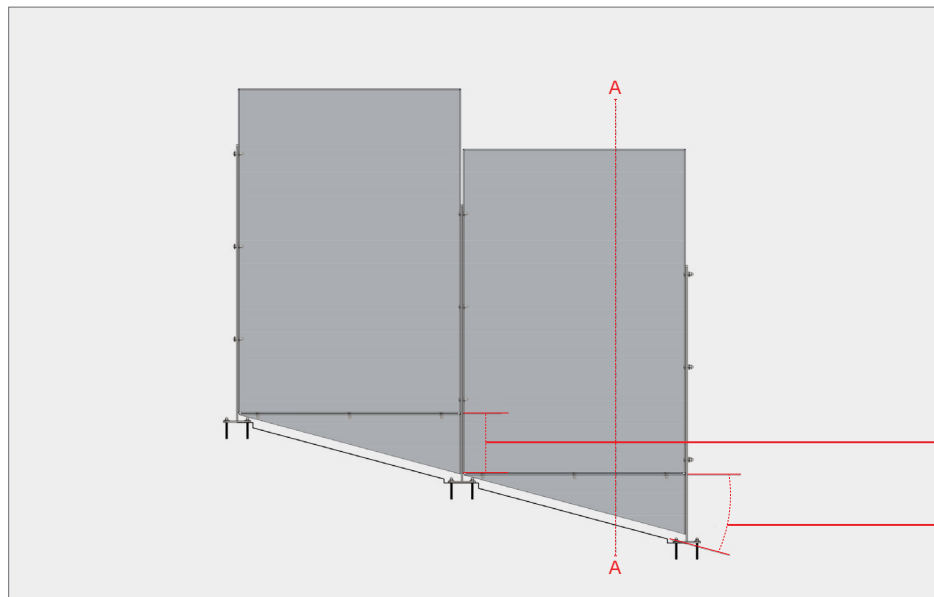
BOKMODERN.COM

For any questions please call
415.749.6500 X 295

TYPICAL DETAILS: SLOPED FENCE



Custom Sloped Panels



**Standard Panels with
Slope Infill Pieces**

Optimized panel sizing (slope):
To even further optimize the system,
typical panels can be used even on
slopes. Ask about our slope filler panels
and how they can be field modified to
accommodate any slope.

→ 1'-1" B.O. Panel to B.O. Panel

→ 15.00° Slope angle



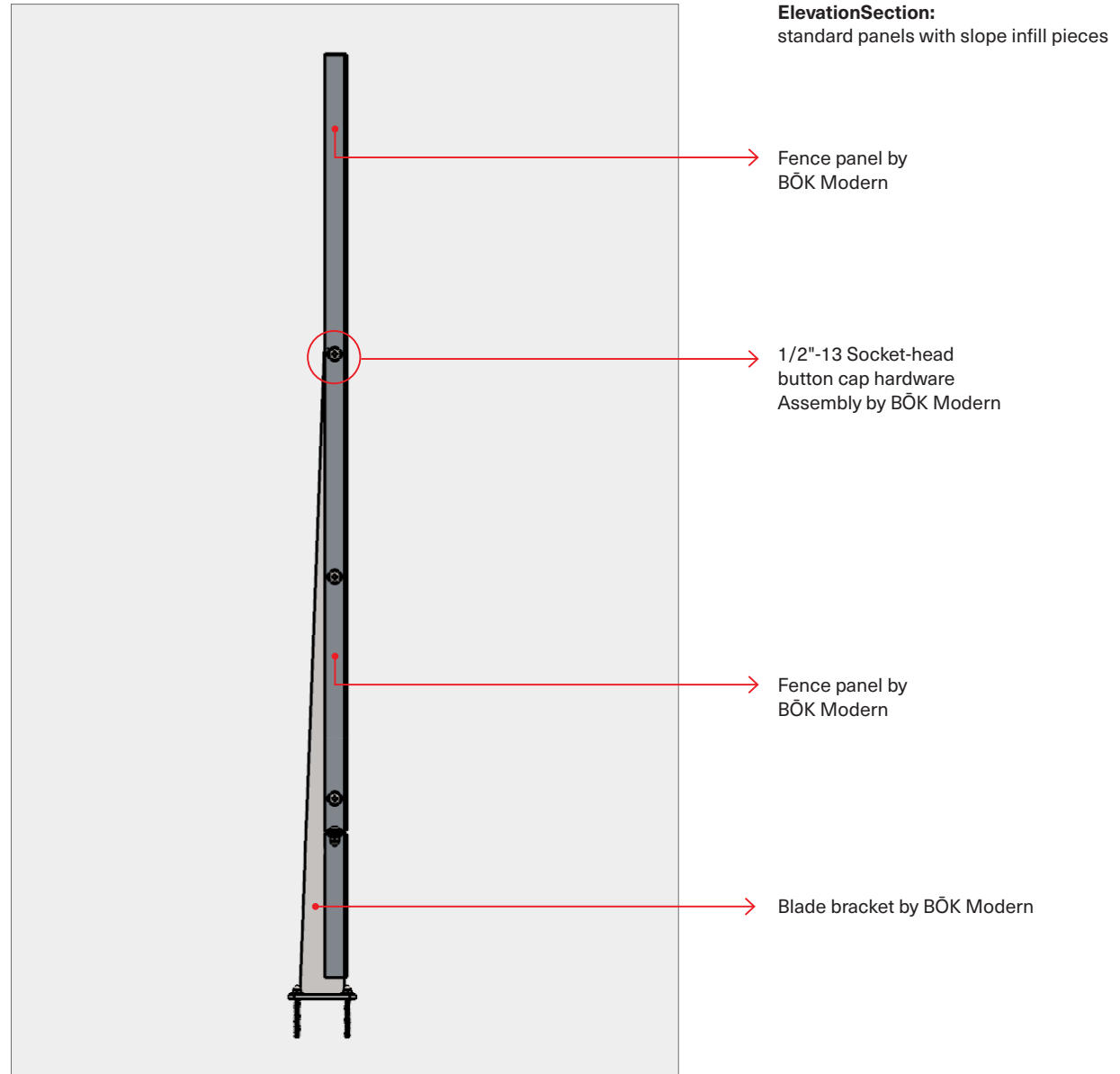
BLADE FENCE POST FENCE

MODULAR FENCE

BOKMODERN.COM

For any questions please call
415.749.6500 X 295

TYPICAL DETAILS: SLOPED FENCE

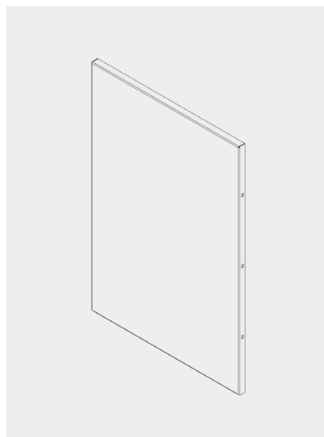




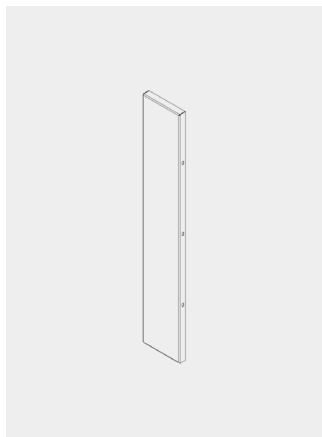
BLADE FENCE POST FENCE

MODULAR FENCE

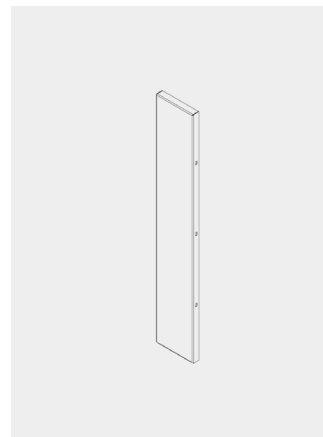
TYPICAL PANEL SIZES



Width : 45"
Fence Height : 4', 6' and 8'



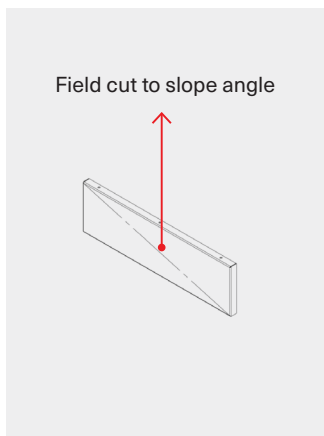
Width : 24"
Fence Height : 4', 6' and 8'



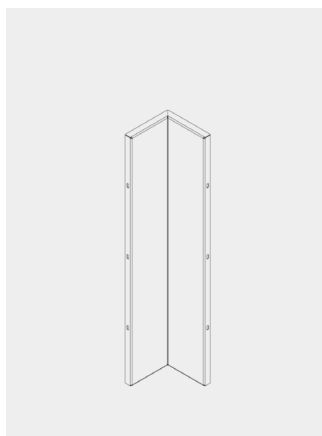
Width : 12"
Fence Height : 4', 6' and 8'



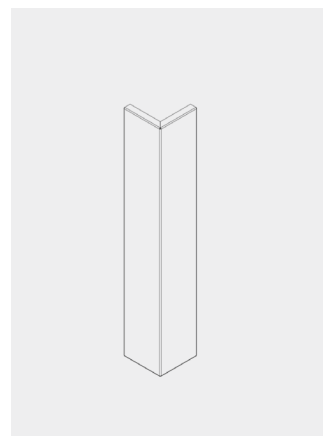
Blade



Sloped Skirt - Precut



Inside Corner ASM



Outside Corner

NOTE:

Optimized panel sizing: In order to optimize the bok system in the most financially efficient way, utilize these panel sizes.

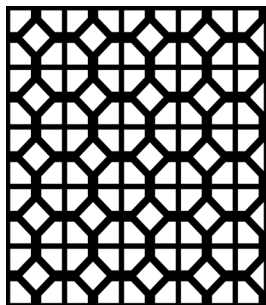
BOKMODERN.COM

For any questions please call
415.749.6500 X 295

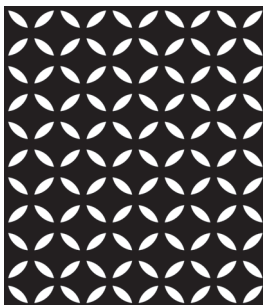
**BLADE FENCE
POST FENCE**

MODULAR FENCE

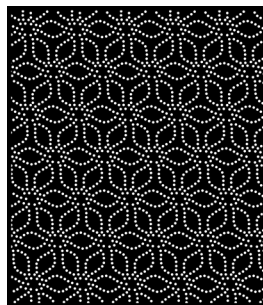
PATTERN OPTIONS



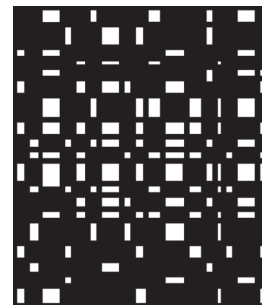
A 01



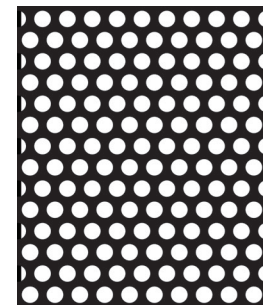
A 07



A 09



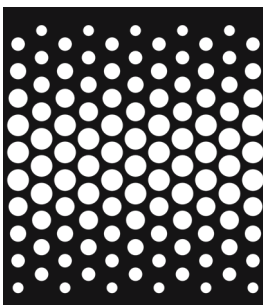
A 12



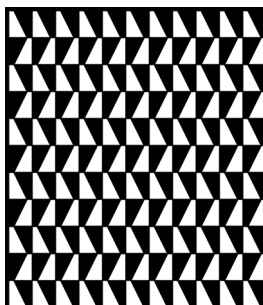
A 14



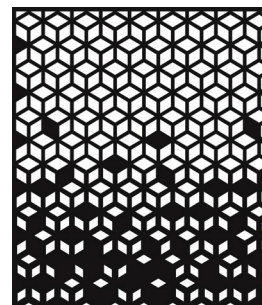
A 18



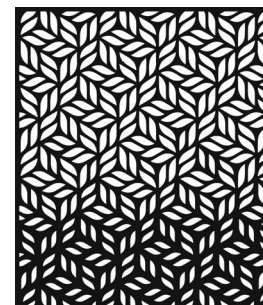
A 23



A 39



A 41



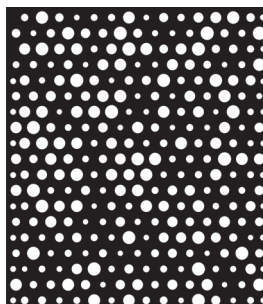
A 42



B 09



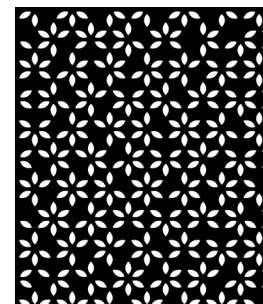
B 21



B 47



C 27



C 37

BOKMODERN.COM

For any questions please call
415.749.6500 X 295