



2120 E. Grand Avenue, Suite 135
El Segundo, CA 90245
(323) 217-4828

DATE: September 8, 2021
TO: Prospective Bidders
FROM: Hugo Garcia, Project Manager
SUBJECT: Addendum No. 13
RFP, Real Journey Academy – Fontana Charter School

This Addendum modifies and forms a part of the Request for Proposal (RFP) issued July 23, 2021 for the above-referenced project. Bidders shall acknowledge receipt of this Addendum in the cover letter.

This Addendum No. 13 provides information for the additional block wall at the south property line:

Provide Approximately 190 linear feet of 6' high concrete block wall along south property line per detail on A1.4. See attached a1.1 site plan.pdf

END OF ADDENDUM NO. 13

PARKING CALCULATIONS

EDUCATION/HIGH SCHOOL, PER SEC. 30-685

STAFF MEMBERS AT FULL BUILD-OUT	45
STUDENTS 800/4	200
VISITORS	10
SUBTOTAL:	255
65% PER SEC. 30-367	166

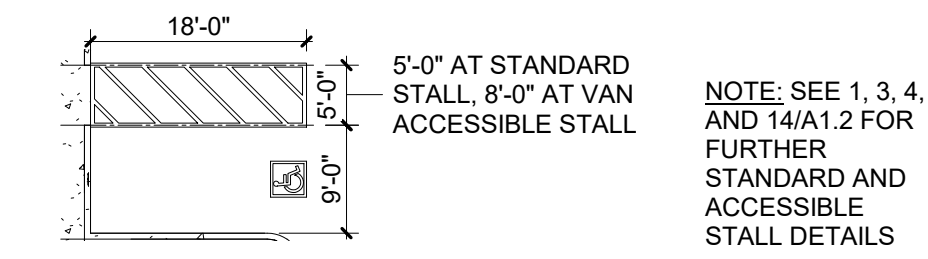
BUS STOP REDUCTION 30-391 (10%), BUS STOP (OMNI TRANS LINES 67.82) AT N.E. CORNER (NORTH BOUND) AND S.W. CORNER (SOUTHBOUND) OF MILLER AND SIERRA, WITHIN 1/4 MILE OF SITE (SEC. 30-391)

- OFF-STREET PARKING REDUCTIONS -16
 TOTAL PARKING REQUIRED: 150
 TOTAL PARKING PROVIDED: 157

TOTAL COMPACT PARKING SPACES: = 23<15% MAX OF 157 (PER SEC. 30-390)
 ELECTRIC VEHICLE CHARGING STATIONS: 10 (9 REGULAR, 1 ADA) PER CAL-GREEN CODE

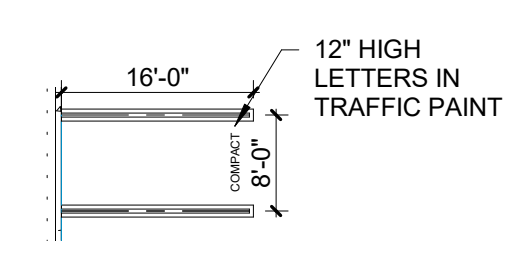
PARKING LEGEND

TABLE 30 - 390 A



ACCESSIBLE PARKING STALL

1/16" = 1'-0"



COMPACT PARKING STALL

1/16" = 1'-0"

REGULAR PARKING STALL

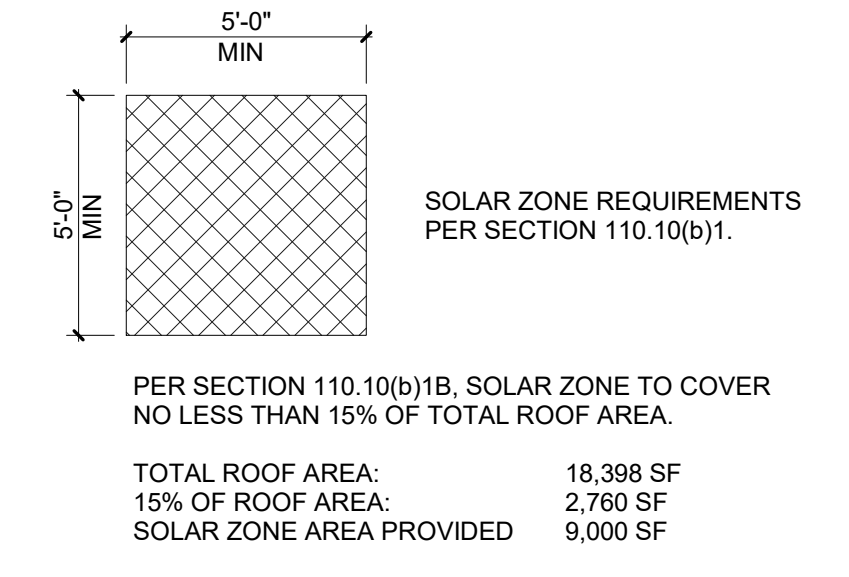
1/16" = 1'-0"

- LOADING ZONE CURB, PAINTED YELLOW
- FIRE CURB, PAINTED RED
- SITE LIGHTING, SEE ELECTRICAL PLANS
- CONTROL JOINT, SEE 3/A1.3
- TRAFFIC ARROW, SEE 14/A1.2
- 6" CONCRETE CURB, 3'-0" RADIUS, TYP. U.N.O.
- SOLAR ZONE
- SYNTHETIC TURF, SEE LANDSCAPE DWGS
- LANDSCAPE / PLANTER, SEE LANDSCAPE DWGS
- CONCRETE, SEE CIVIL
- ASPHALT PAVING, SEE CIVIL
- TREES AND PLANTS, SEE LANDSCAPE DWGS
- PROPERTY LINE
- SET BACK
- ACCESSIBLE PATH OF TRAVEL
- EV ELECTRIC VEHICLE CHARGING STATION DESTINATION
- COMPACT COMPACT SPACE

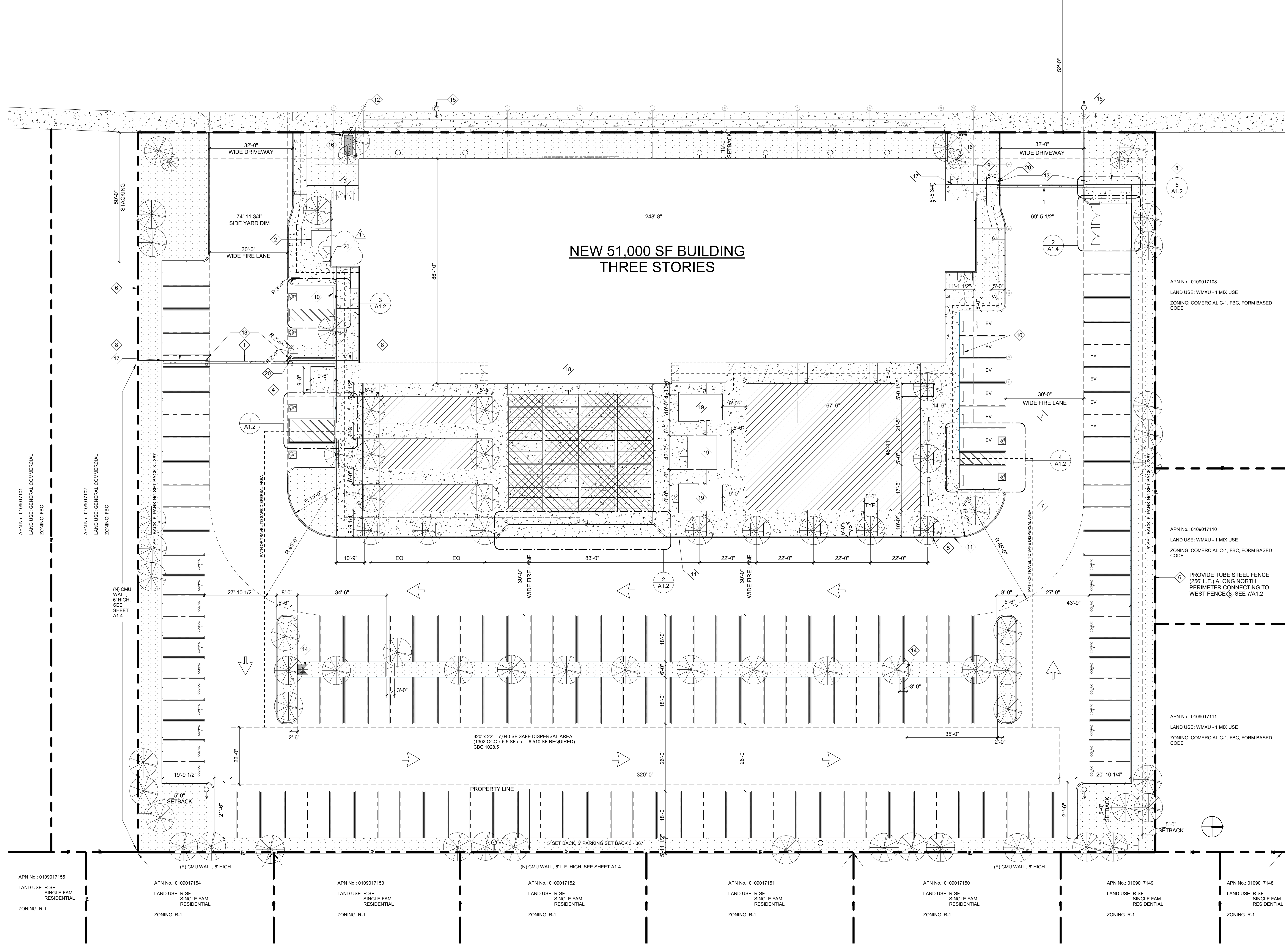
LEGEND

- 12 SLIDING GATE AND 6'-0" HIGH FENCE, SEE 5/A1.2, 6/A1.2, 11/A1.2, & 7/A1.2
- 2 TRANSFORMER, SEE ELECTRICAL PLANS
- 3 ELECTRICAL ROOM, SEE ELECTRICAL PLANS FOR EQUIPMENT WITHIN
- 4 SIDEWALK, -5% SLOPE WITH 6" CURB EACH SIDE
- 5 5'-0" X 5'-0" TREE PLANTER, TYP.
- 6 TUBE STEEL FENCE
- 7 BIKE RACK, SEE 18/A1.2
- 8 28' LONG TUBE STEEL FENCE, SEE 8/A1.2
- 9 21' LONG TUBE STEEL FENCE, SEE 8/A1.2
- 10 CONCRETE WHEEL STOP, TYP., SEE 16/A1.2
- 11 PAINT FIRELANE CURB @ ALL CURBS ADJACENT TO FIRELANE
- 12 DOUBLE DETECTOR CHECK
- 13 PIPE BOLLARD, SEE 15/A1.2
- 14 GRATE, SEE CIVIL
- 15 STREET LIGHTS BY OTHERS
- 16 FIRE HYDRANT, SEE CIVIL DRAWINGS
- 17 6" H. FENCE & GATE WITH PANIC HARDWARE
- 18 CANOPY SHADE STRUCTURE, SEE A1.5
- 19 POP-UP BUILDINGS, SEE A7.1
- 20 KNOX BOXES

KEYNOTES



SIERRA AVE



SITE PLAN
 1/16" = 1'-0"