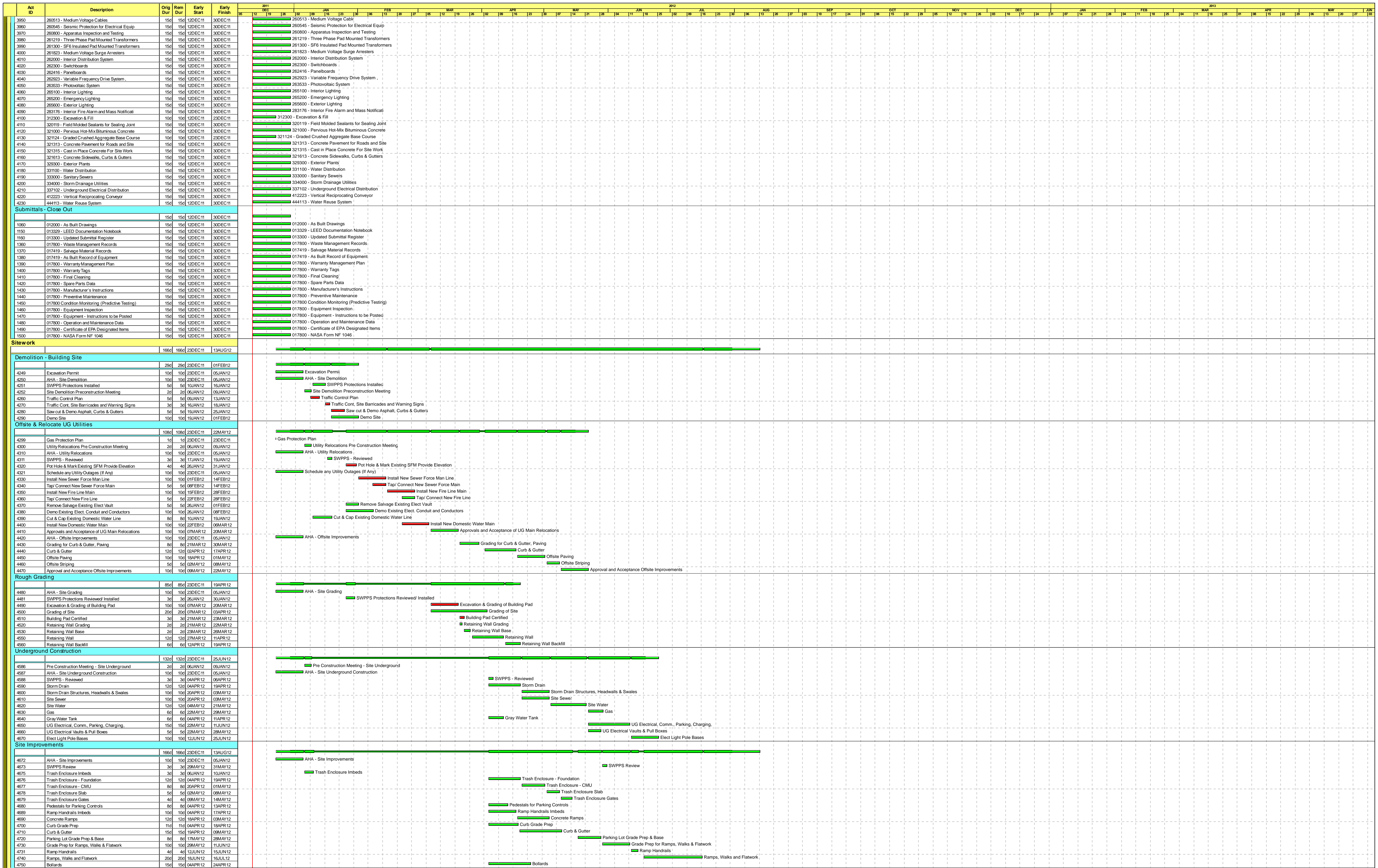


Act ID	Description	Orig Dur	Rem Dur	Early Start	Early Finish	2011												2012												2013															
						DEC	JAN	FEB	MAR	APR	MAY	JUN	JUL	AUG	SEP	OCT	NOV	DEC	JAN	FEB	MAR	APR	MAY	JUN	JUL	AUG	SEP	OCT	NOV	DEC	JAN	FEB	MAR	APR	MAY	JUN	JUL	AUG	SEP	OCT	NOV	DEC			
NASA - Facilities Support Center						371d	371d	12DEC11	16MAY13																																				
General Requirements																																													
1350	Notice to Proceed	1d	1d	12DEC11	12DEC11																																								
1520	Pre Construction Video & Photos	3d	3d	22DEC11	27DEC11																																								
2610	Partnering Meeting	2d	2d	12DEC11	13DEC11																																								
2611	Partnering Meeting	2d	2d	12DEC11	13DEC11																																								
2619	Activity Hazard Analysis - Mobilization	10d	10d	12DEC11	21DEC11																																								
2620	Pre Construction Administrative Requirements	20d	20d	12DEC11	01JAN12																																								
2621	Mobilization	10d	10d	26DEC11	05JAN12																																								
Submittals																																													
Submittals - Preconstruction																																													
1040	011400 - 01 List of Contact Personnel - G	15d	15d	12DEC11	30DEC11																																								
1050	011400 - 01 Schedule of Prices - G	15d	15d	12DEC11	30DEC11																																								
1070	012000 - 01 Location Map - G	10d	10d	12DEC11	23DEC11																																								
1080	012000 - 01 Pre Construction Pictures - G	10d	10d	12DEC11	23DEC11																																								
1090	013000 - 01 Vehicle List - G	10d	10d	12DEC11	23DEC11																																								
1091	013000 - 01 Pre Construction Video & Photos - G	10d	10d	12DEC11	23DEC11																																								
1100	013000 - 04 Samples - Color Board - G	30d	30d	12DEC11	13APR12																																								
1101	013301 - 01 Project Schedule - G	15d	15d	12DEC11	30DEC11																																								
1120	013300 - 01 Submittal Register - G	15d	15d	12DEC11	30DEC11																																								
1130	013329 - 01 LEED Implementation Plan - G	15d	15d	12DEC11	30DEC11																																								
1140	013514 - 01 Contractors Health and Safety Plan	8d	8d	12DEC11	21DEC11																																								
1170	013514 - 01 Activity Hazard Analysis - G	10d	10d	12DEC11	23DEC11																																								
1180	013514 - 01 Request for Excavation Permit - G	10d	10d	12DEC11	23DEC11																																								
1190	013514 - 01 Req for Utility Outage Permit - G	10d	10d	12DEC11	23DEC11																																								
1200	013514 - 01 Request for Crane Operation - G	10d	10d	12DEC11	23DEC11																																								
1210	013514 - 01 Request for Open Flame Permit - G	10d	10d	12DEC11	23DEC11																																								
1220	013514 - 06 Gas Protection	10d	10d	12DEC11	23DEC11																																								
1221	013514 - 07 Protection Plan	10d	10d	12DEC11	23DEC11																																								
1232	013514 - 07 License Certificates	10d	10d	12DEC11	23DEC11																																								
1240	013514 - 07 Safety Meeting Sign In Sheets	10d	10d	12DEC11	23DEC11																																								
1250	013514 - 07 Safety Inspection Sheets	10d	10d	12DEC11	23DEC11																																								
1260	013514 - 08 Material Safety Data Sheets - G	10d	10d	12DEC11	23DEC11																																								
1270	014500 - 01 QC Plan - G	15d	15d	12DEC11	30DEC11																																								
1280	014535 - 07 Certificates - Special Inspector - G	15d	15d	12DEC11	30DEC11																																								
1290	014535 - 01 QA Plan - G	15d	15d	12DEC11	30DEC11																																								
1300	015000 - 01 Construction Site Plan	10d	10d	12DEC11	23DEC11																																								
1310	015000 - 01 Traffic Control Plan - G	10d	10d	12DEC11	23DEC11																																								
1320	015000 - 06 Test Reports - Backflow Prev. Test	21d	21d	12DEC11	02JAN12																																								
1330	015000 - 07 Certificate - Backflow Tester	10d	10d	12DEC11	23DEC11																																								
1331	015000 - 07 Backflow Preventers	15d	15d	12DEC11	30DEC11																																								
1340	017419 - 01 Waste Management Plan	10d	10d	12DEC11	23DEC11																																								
Submittals - Site Work																																													
1510	024100 - 01 Existing Conditions G	10d	10d	12DEC11	23DEC11																																								
1530	024100 - 07 Notifications - G	10d	10d	12DEC11	23DEC11																																								
1540	033000 - 02 Rebar Sitework Shop Drawings - G	15d	15d	12DEC11	30DEC11																																								
Submittals - Building																																													
1550	033000 - Cast In Place Concrete	15d	15d	12DEC11	30DEC11																																								
2000	042000 - Masonry	15d	15d	12DEC11	30DEC11																																								
2200	051200 - Structural Steel	15d	15d	12DEC11	30DEC11																																								
2430	053000 - Steel Decks	15d	15d	12DEC11	30DEC11																																								
2440	054000 - Cold Formed Metal Framing	15d	15d	12DEC11	30DEC11																																								
2680	055013 - Structural Steel Door Frames	15d	15d	12DEC11	30DEC11																																								
2690	055013 - Access Doors and Panels	15d	15d	12DEC11	30DEC11																																								
2700	055013 - Cover Plates and Frames	15d	15d	12DEC11	30DEC11																																								
2710	055013 - Expansion Joint Covers	15d	15d	12DEC11	30DEC11																																								
2720	055013 - Floor Gratings and Roof Walkways	15d	15d	12DEC11	30DEC11																																								
2730	055013 - Wheel Guards	15d	15d	12DEC11	30DEC11																																								
2740	055013 - Angles and Plates	15d	15d	12DEC11	30DEC11																																								
2750	055013 - Roof Hatch	15d	15d	12DEC11	30DEC11																																								
2860	055100 - Metal Stairs	15d	15d	12DEC11	30DEC11																																								
2870	055113 - Metal Alternating Tread Stairs	15d	15d	12DEC11	30DEC11																																								
2871	055200 - Metal Railings	15d	15d	12DEC11	30DEC11																																								
3310	064100 - Laminate Clad Architectural Casework	15d	15d	12DEC11	30DEC11																																								
3370	071200 - Built-up Bituminous Waterproofing	15d	15d	12DEC11	30DEC11																																								
3380	072116 - Natural Cotton Fiber Blanket Insulation	15d	15d	12DEC11	30DEC11																																								
3390	072200 - Rigid Insulation	15d	15d	12DEC11	30DEC11																																								
3400	074213 - Metal Wall Panels	15d	15d	12DEC11	30DEC11																																								
3410	075419 - Thermoplastic Polyolefin (TPO) Roofing	15d	15d	12DEC11	30DEC11																																								
3420	076000 - Flashing & Sheet Metal	15d	15d	12DEC11	30DEC11																																								
3430	076100 - Standing Seam Metal Roofing	15d	15d	12DEC11	30DEC11																																								
3440	078400 - Fire stopping	15d	15d	12DEC11	30DEC11																																								
3460	079200 - Joint Sealants	15d	15d	12DEC11	30DEC11																																								
3470	081113 - Steel Doors and Frames	15d	15d	12DEC11	30DEC11																																								
3480	081116 - Aluminum Doors and Frames	15d	15d	12DEC11	30DEC11																																								
3490	081400 - Wood Doors	15d	15d	12DEC11	30DEC11																																								
3500	083233 - Overhead Ceiling Doors	15d	15d	12DEC11	30DEC11																																								
3510	084113 - Aluminum Framed Entrances and Storefront	15d	15d	12DEC11	30DEC11																																								
3520	084400 - Insulated Translucent Fiberglass Wall P	15d	15d	12DEC11	30DEC11																																								
3530	085113 - Aluminum Windows	15d	15d	12DEC11	30DEC11																																								
3540	086200 - Tubular Daylighting Devices	15d	15d	12DEC11	30DEC11																																								
3550	087100 - Door Hardware	15d	15d	12DEC11	30DEC11																																								
3560	088100 - Glazing	15d	15d	12DEC11	30DEC11																																								
3570	089100 - Metal Wall Louvers	15d	15d	12DEC11	30DEC11																																								
3580	090690 - Color Schedule	15d	15d	12DEC11	30DEC11																																								
3590	092200 - Supports for Plaster and Gypsum Board	15d	15d	12DEC11	30DEC11																																								
3600	092900 - Gypsum Board	15d	15d	12DEC11	30DEC11																																								
3610	093000 - Ceramic Tile	15d	15d	12DEC11	30DEC11																																								
3620	095100 - Acoustic Ceilings	15d	15d	12DEC11	30DEC11																																								
3630	096500 - Resilient Flooring	15d	15d	12DEC11	30DEC11																																								
3640	096800 - Carpet	15d	15d	12DEC11	30DEC11																																								
3650	099000 - Paints & Coatings	15d	15d	12DEC11	30DEC11																																								
3660	102813 - Toilet Accessories	15d	15d	12DEC11	30DEC11																																								
3670	104416 - Fire Extinguishers	15d	15d	12DEC11	30DEC11																																								
3680	105113 - Plastic Lockers	15d	15d	12DEC11	30DEC11																																								
3690	123100 - Manufactured Metal Casework	15d	15d	12DEC11	30DEC11																																								
3700	123600 - Countertops	15d	15d	12DEC11	30DEC11																																								
3710	124513 - Entrance Floor Maps	15d	15d	12DEC11	30DEC11																																								
3720	211313 - Wet Pipe Sprinkler Systems	15d	15d	12DEC11	30DEC11																																								
3730	220000 - Plumbing General Purpose	15d	15d	12DEC11	30DEC11																																								
3740	220548 - Mechanical Sound, Vibration and Seismic	15d	15d	12DEC11	30DEC11																																								
3750	220719 - Plumbing Piping Insulation	15d	15d	12DEC11	30DEC11																																								
3760	221509 - Compressed Air - Cleaning Procedures	15d	15d	12DEC11	30DEC11																																								
3770	221514 - Compressed Air - Low Pressure	15d	15d	12DEC11	30DEC11																																								
3780	230000 - Air Supply Distribution, Ventilation,	15d	15d	12DEC11	30DEC11																																								
3790	230300 - Basic Mechanical Materials and Methods	15d	15d	12DEC11	30DEC11																																								
3800	230515 - Common Piping for HVAC	15d	15d	12DEC11	30DEC11																																								
3810	230548 - Vibration & Seismic Controls HVAC Piping	15d	15d	12DEC11	30DEC11																																								
3820	230700 - Testing, Adjusting and Balancing HVAC	15d	15d	12DEC11	30DEC11																																								
3830	230700 - Thermal Insulation for Mech Systems	15d	15d	12DEC11	30DEC11																																								
3840	230800 - Commissioning of HVAC Systems	15d	15d	12DEC11	30DEC11																																								
3850	230923 - BACnet Direct Digital Control, Systems	15d	15d	12DEC11	30DEC11																																								
3860	231125 - Refrigerant Piping	15d	15d	12DEC11	30DEC11																																								
3870	232500 - Chemical Treatment of Water for Mechani	15d	15d	12DEC11	30DEC11																																								
3880	233519 - Industrial Ventilation and Exhaust	15d	15d	12DEC11	30DEC11																																								
3890	235200 - Heating Boilers	15d	15d	12DEC11	30DEC11																																								
3900	236410 - Water Chillers, Vapor Compression Type	15d	15d	12DEC11	30DEC11																																								
3910	237600 - Evaporative Cooling Systems	15d	15d	12DEC11	30DEC11																																								
3920	238202 - Unitary Heating and Cooling Equipment	15d	15d	12DEC11	30DEC11																																								
3930	260000 - Basic Electrical Materials and Methods	15d	15d	12DEC11	30DEC11																																								
3940	260500 - Common Work Results for Electrical	15d	15d	12DEC11	30DEC11																																								

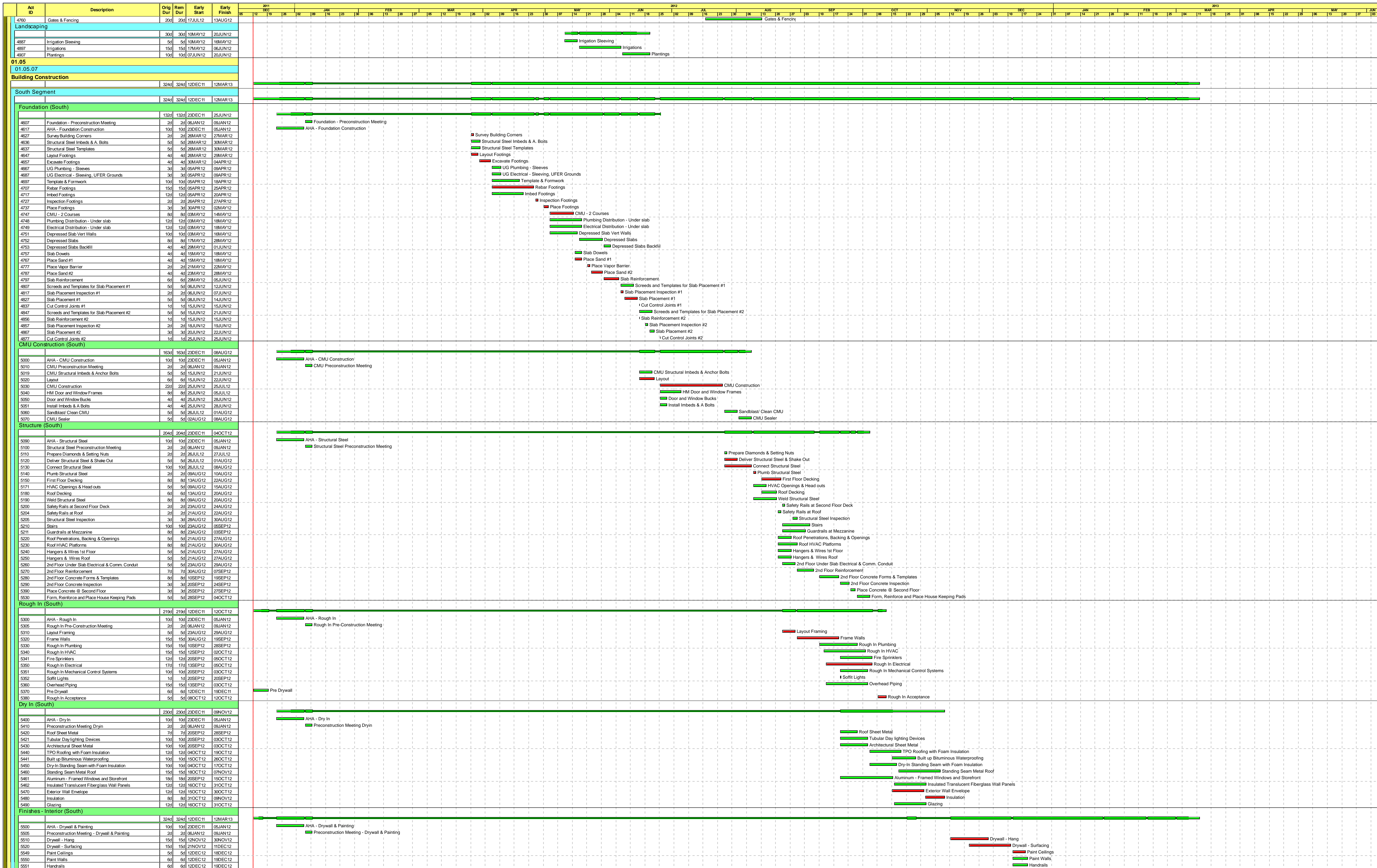
Start date 12DEC11
 Finish date 10SEP12
 Data date 12DEC11
 Run date 02DEC11
 Page number 1A
 © Primavera Systems, Inc.

■ Early bar
■ Progress bar
■ Critical bar
■ Summary bar
◆ Start milestone point
◆ Finish milestone point

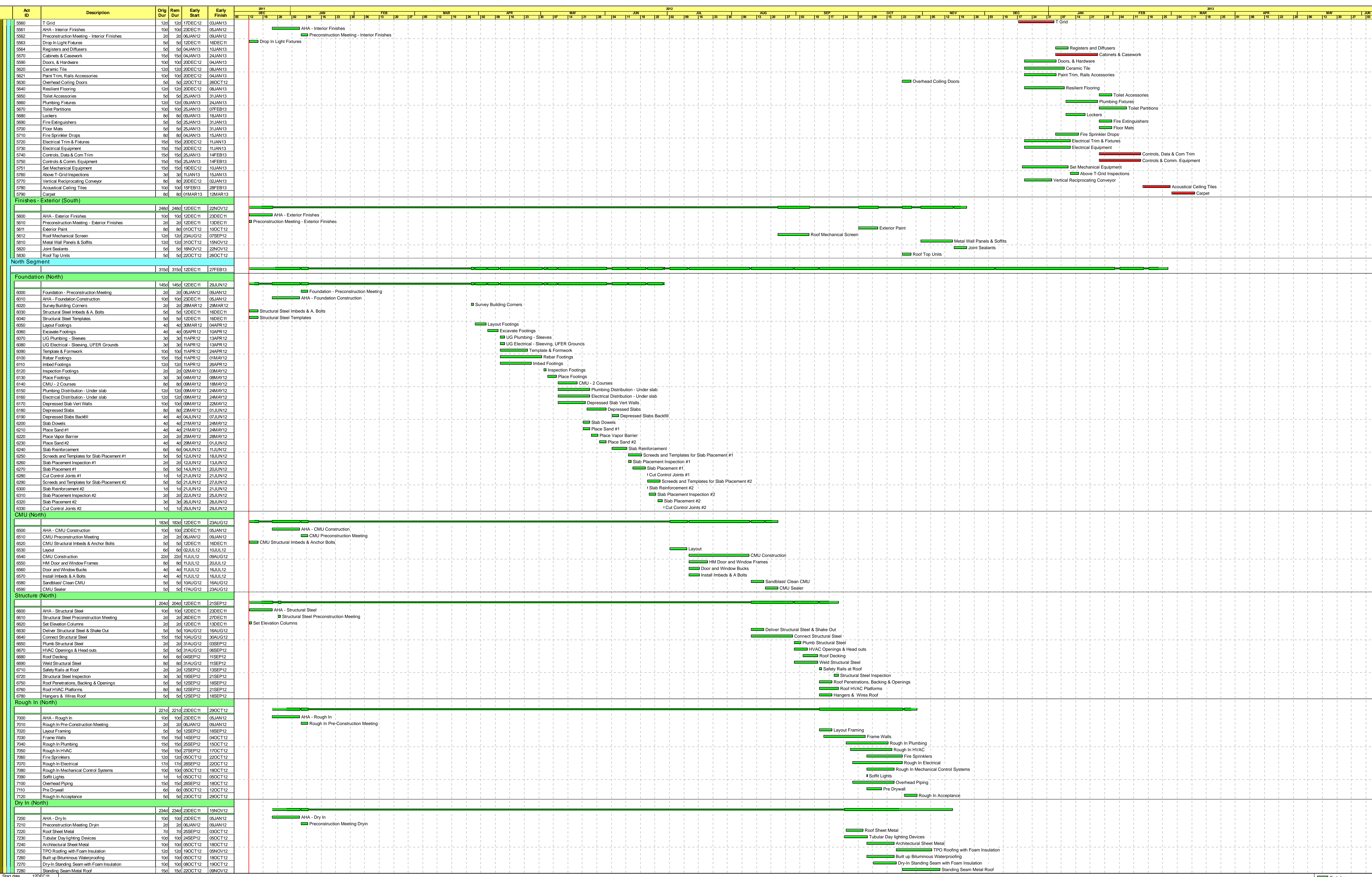


Start date	12DEC11
Finish date	10SEP12
Data date	12DEC11
Run date	02DEC11
Page number	2A
© Primavera Systems, Inc.	

■ Early bar
■ Progress bar
■ Critical bar
■ Summary bar
◆ Start milestone point
◆ Finish milestone point

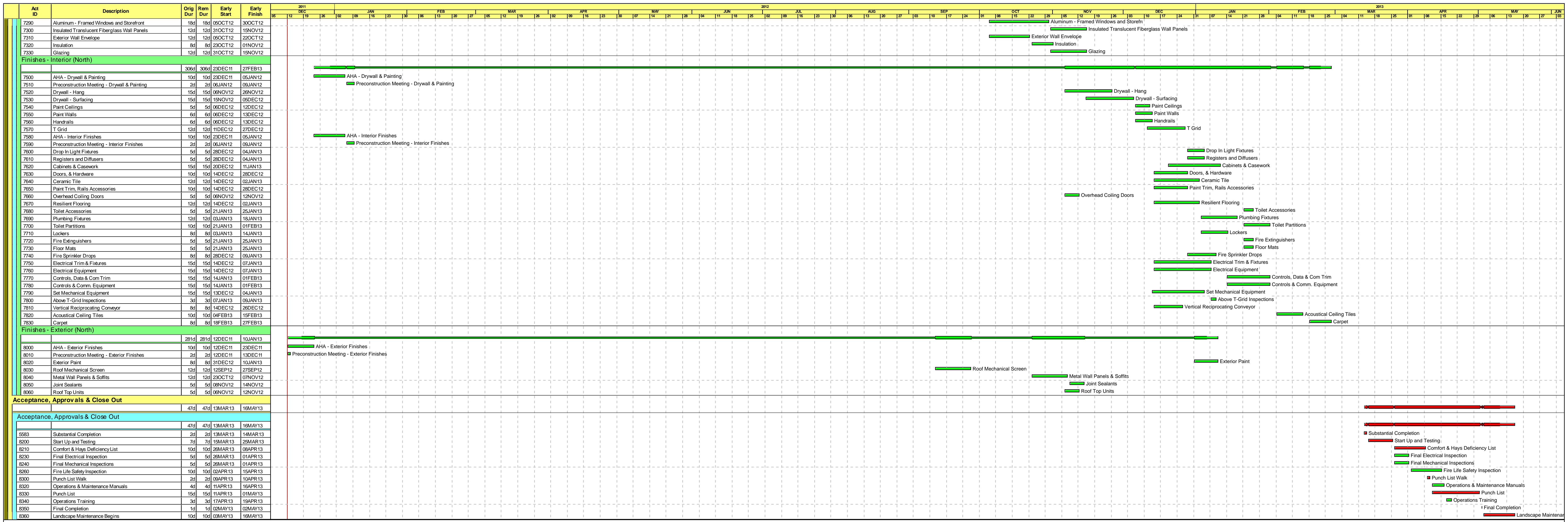


Start date	12DEC11
Finish date	10SEP12
Data date	12DEC11
Run date	02DEC11
Page number	3A
© Primavera Systems, Inc.	



Start date	12DEC11
Finish date	10SEP12
Data date	12DEC11
Run date	02DEC11
Page number	4A
© Primavera Systems, Inc.	

- Early bar
- Progress bar
- Critical bar
- Summary bar
- ◆ Start milestone point
- ◆ Finish milestone point



Start date 12DEC11
 Finish date 10SEP12
 Data date 12DEC11
 Run date 02DEC11
 Page number 5A
 © Primavera Systems, Inc.

Early bar
 Progress bar
 Critical bar
 Summary bar
 Start milestone point
 Finish milestone point